



Cordless Fan Jacket Series

DFJ210 / DFJ211 / DFJ310 / DFJ311 / DFJ410 / DFJ411
DFJ212 / DFJ213 / DFJ214 / DFV210



Stay cool in hot harsh job sites



Effective cooling air flow generated
by two Fan units with BL motor



Circulate air throughout the entire jacket



AIR CIRCULATION
Cordless Fan Jacket



Thin, Flat Fan units do not disturb your operation.



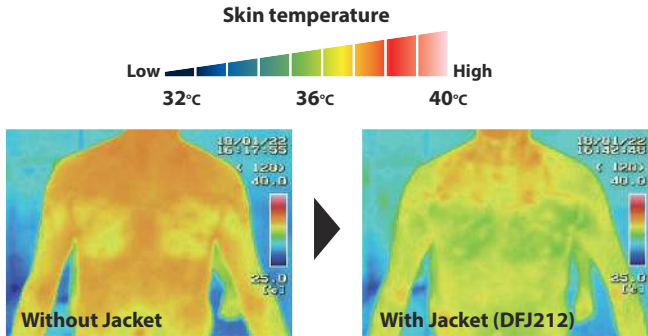
39.5 mm



Comparison of body temperature rise during work

Skin temperature after a 10-minute work under temperature of 35°C and humidity of 60%

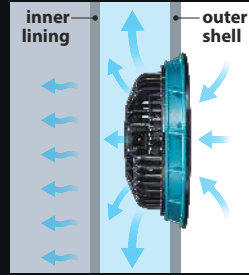
Never use the fan jacket where temperature reaches more than 50°C (122°F). Otherwise it may cause burns on your skin. Also avoid using in high humidity.



Makita's original "Air circulation inner"



Breathable lining



allows air enter through the jacket's outer shell and inner lining keeps you to stay cool and feel comfortable

For model



DFV210



DFJ212

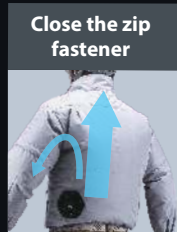


DFJ213

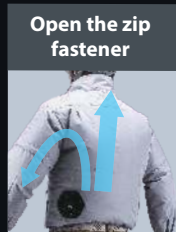


DFJ214

Air flow can be adjusted by opening and closing inner lining's fastener



Mainly ventilated at back of neck



Well-balanced ventilation

For model



DFJ310
DFJ311



DFJ410
DFJ411

Use of high performance fabric to fit the various scenes



Breathable water-repellent fabric

water scarcely permeate even the water-resistant pressure of 1,000mm



DFV210



DFJ212



Stretchable fabric

lightweight, stretchable, windproof comfortable to wear



DFJ213



Water-repellent, antistatic fabric

water-repellent and breathability make reduced in stuffy feeling



DFJ214

Moisture-permeable, water-repellent fabric



DFV210

P4



DFJ212

P5

Stretchable fabric



DFJ213

P6

Water-repellent, antistatic fabric



DFJ214

P7

Polyester



DFJ210

DFJ211

P8

Cotton



DFJ310

DFJ311

P9

Polyester + Titanium processing



DFJ410

DFJ411

P10



DFV210
Polyester

Polyester Breathable water-repellent Vest type

Cordless Fan Vest

Silver gray + camouflage color Stand-up collar

DFV210



Size	Length	Shoulder	Chest	Waist
S	63/67	39/43	106/113	100/107
M	65/69	41/45	111/118	105/112
L	67/71	43/47	116/123	110/117
XL	69/72	45/49	121/128	115/122
2XL	71/73	47/51	126/133	120/127
3XL	73/74	49/53	131/138	125/132

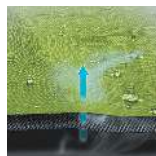
Asian Size / EU&US Size (in cm)

AIR CIRCULATION

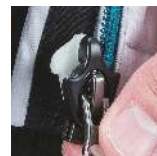
■ DFV210



Air circulation inner
photo: DFJ212



Breathable
water-repellent fabric



Insert supporting
slider



Drawcord on hem
for adjustable fit



DFJ212
Polyester

Polyester Breathable water-repellent Casual wear type

Cordless Fan Jacket

Lime-green + navy Stand-up collar with stowaway hood

DFJ212



Storable hood

AIR CIRCULATION

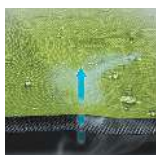
DFJ212

Size	Length	Shoulder	Sleeve	Chest	Waist
S	62/66	40/44	79/87	108/117	102/111
M	64/68	42/46	82/90	113/122	107/116
L	66/70	44/48	85/93	118/127	112/121
XL	68/71	46/50	88/95	123/132	117/126
2XL	70/72	48/52	91/97	128/137	122/131
3XL	72/73	50/54	92/99	133/142	127/136

Asian Size / EU&US Size (in cm)



Air circulation inner



Breathable water-repellent fabric



Insert supporting slider



Velcro tabs for cuff adjustment



Drawcord on hem for adjustable fit



Arm pocket



DFJ213
Polyester

Polyester Stretchable Working wear type

Cordless Fan Jacket

Charcoal gray Stand-up collar

DFJ213



Size	Length	Shoulder	Sleeve	Chest	Waist
S	61/65	43/47	58/62	109/117	95~103/ 103~111
M	63/67	45/49	60/64	114/122	100~108/ 108~116
L	65/69	47/51	62/66	119/127	105~113/ 113~121
XL	67/70	49/53	64/67	124/132	110~118/ 118~126
2XL	69/71	51/55	66/68	129/137	115~123/ 123~131
3XL	70/72	53/57	66/69	134/142	120~128/ 128~136

Asian Size / EU&US Size
(in cm)

AIR CIRCULATION

DFJ213



Air circulation inner
photo : DFJ212



Stretchable fabric



Zip fastener with quick
release function



Pen pocket



Snap button and
rubber shirring for hem
adjustment



DFJ214
Polyester

Polyester Water repellent and antistatic fabric High visibility type

Cordless Fan Jacket

Fluorescent yellow Stand-up collar

DFJ214



Retroreflective material



AIR CIRCULATION



DFJ214

Size	Length	Shoulder	Sleeve	Chest	Waist
S	64/68	43/47	58/62	109/117	95~103/ 103~111
M	66/70	45/49	60/64	114/122	100~108/ 108~116
L	68/72	47/51	62/66	119/127	105~113/ 113~121
XL	70/73	49/53	64/67	124/132	110~118/ 118~126
2XL	72/74	51/55	66/68	129/137	115~123/ 123~131
3XL	73/75	53/57	66/69	134/142	120~128/ 128~136

Asian Size / EU&US Size (in cm)



Air circulation inner photo : DFJ212



Water-repellent, antistatic fabric



Antistatic



Zip fastener with quick release function



Arm pocket



Snap button and rubber shirring for hem adjustment

DFJ210/DFJ211
Polyester



Polyester Water repellent

Cordless Fan Jacket

Light sky gray

Stand-up collar

DFJ210

Light sky gray

With hood

DFJ211



■ DFJ210

■ DFJ211

Size	Length	Shoulder	Sleeve	Chest	Waist
S	62/68	50/56.5	52/58	114/126	74~105/ 87~113
M	64/70	52/59	54/60	118/131	78~109/ 92~113
L	66/72	54/61.5	56/62	122/136	82~113/ 97~113
XL	68/74	56/64	58/64	126/141	86~117/ 102~113
2XL	70/76	58/66.5	60/66	130/146	90~121/ 107~138
3XL	72/78	60/69	62/68	134/151	94~125/ 112~143

Asian Size / EU&US Size
(in cm)



Mesh pocket for
ice pack



Pen pocket



Hood with mesh ear
design



DFJ310/DFJ311
Cotton

Cotton High durability and water absorbing



Cordless Fan Jacket

Dark blue **Stand-up collar**

DFJ310

Dark blue **With hood**

DFJ311

Size	Length	Shoulder	Sleeve	Chest	Waist
S	62/68	50/56.5	52/58	114/126	74~105/ 87~113
M	64/70	52/59	54/60	118/131	78~109/ 92~113
L	66/72	54/61.5	56/62	122/136	82~113/ 97~113
XL	68/74	56/64	58/64	126/141	86~117/ 102~113
2XL	70/76	58/66.5	60/66	130/146	90~121/ 107~138
3XL	72/78	60/69	62/68	134/151	94~125/ 112~143

Asian Size / EU&US Size
(in cm)



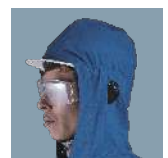
Mesh pocket for ice pack
photo : DFJ210



Foldable sleeves



Pen pocket



Hood with mesh ear design



DFJ410/DFJ411
 UV Resistant
 titanium-coated polyester

Titanium-coated polyester UV and IR resistant



Cordless Fan Jacket

Dark cream gray **Stand-up collar**

DFJ410

Dark cream gray **With hood**

DFJ411

Size	Length	Shoulder	Sleeve	Chest	Waist
S	62/68	50/56.5	52/58	114/126	74~105/ 87~113
M	64/70	52/59	54/60	118/131	78~109/ 92~113
L	66/72	54/61.5	56/62	122/136	82~113/ 97~113
XL	68/74	56/64	58/64	126/141	86~117/ 102~113
2XL	70/76	58/66.5	60/66	130/146	90~121/ 107~138
3XL	72/78	60/69	62/68	134/151	94~125/ 112~143

Asian Size / EU&US Size
 (in cm)



Mesh pocket for ice pack
 photo : DFJ210



Foldable sleeves
 photo : DFJ310



Pen pocket
 photo : DFJ210



Shoulder pads



Loops for attaching safety pin
 photo : DFJ310



Hood with mesh ear design

Jacket Size

Fan Jacket

photo : DFJ211



	Asian Size / EU&US Size	S	M	L	XL	2XL	3XL
DFJ212	Length	62/66	64/68	66/70	68/71	68/71	72/73
	Shoulder	40/44	42/46	44/48	46/50	48/52	50/54
	Sleeve	79/87	82/90	85/93	88/95	91/97	92/99
	Chest	108/117	113/122	118/127	123/132	128/137	133/142
	Waist	102/111	107/116	112/121	117/126	122/131	127/136
DFJ213	Length	61/65	63/67	65/69	67/70	69/71	70/72
	Shoulder	43/47	45/49	47/51	49/53	51/55	53/57
	Sleeve	58/62	60/64	62/66	64/67	66/68	66/69
	Chest	109/117	114/122	119/127	124/132	129/137	134/142
	Waist	95~103/ 103~111	100~108/ 108~116	105~113/ 113~121	110~118/ 118~126	115~123/ 123~131	120~128/ 128~136
DFJ214	Length	64/68	66/70	68/72	70/73	72/74	73/75
	Shoulder	43/47	45/49	47/51	49/53	51/55	53/57
	Sleeve	58/62	60/64	62/66	64/67	66/68	66/69
	Chest	109/117	114/122	119/127	124/132	129/137	134/142
DFJ210 DFJ211 DFJ310 DFJ311 DFJ410 DFJ411	Length	62/68	64/70	66/72	68/74	70/76	72/78
	Shoulder	50/56.5	52/59	54/61.5	56/64	58/66.5	60/69
	Sleeve	52/58	54/60	56/62	58/64	60/66	62/68
	Chest	114/126	118/131	122/136	126/141	130/146	134/151
	Waist	74~105/ 87~113	78~109/ 92~113	82~113/ 97~113	86~117/ 102~113	90~121/ 107~138	94~125/ 112~143
DFV210	Length	63/67	65/69	67/71	69/72	71/73	73/74
	Shoulder	39/43	41/45	43/47	45/49	47/51	49/53
	Chest	106/113	111/118	116/123	121/128	126/133	131/138
	Waist	100/107	105/112	110/117	115/122	120/127	125/132

(in cm)

Fan Vest

photo : DFV210



Accessories

Battery holder Powered by Makita Li-ion Battery

CXT

12Vmax
LITHIUM-ION



LXT

18V
LITHIUM-ION



USB output switch
Slide switch enables USB apparatus to operate.

USB Power terminal
• Type A DC5V-2.1A
• Single port
• With rubber cap

Air flow control panel



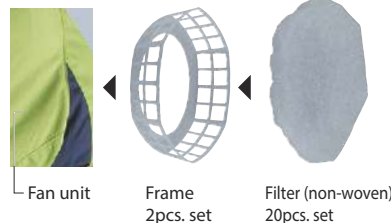
Turbo button

When Turbo button is pushed, air flow can be increased for about 1 minute.
(After 1 minute, the air level comes back to normal mode.)

Power ON/OFF & Cooling air volume control (3stages)

Filter set

Attaching a filter to Fan unit prevents the dust invasion into jacket at work site.



	Part No.
Filter set	198642-3
Filter 20pcs. set	198644-9
	EU Part No.
Filter set	198641-5
Filter 20pcs. set	198643-1

Longer continuous run time on a single full battery charge

Li-ion Battery	Continuous run time
18V BL1815N / BL1820B / BL1830B BL1840B / BL1850B / BL1860B	Low / Medium / High 33 / 24.5 / 13.5 h with BL1860B
12Vmax BL1016 / BL1021B / BL1041B	Low / Medium / High 13 / 9 / 5 h with BL1041B

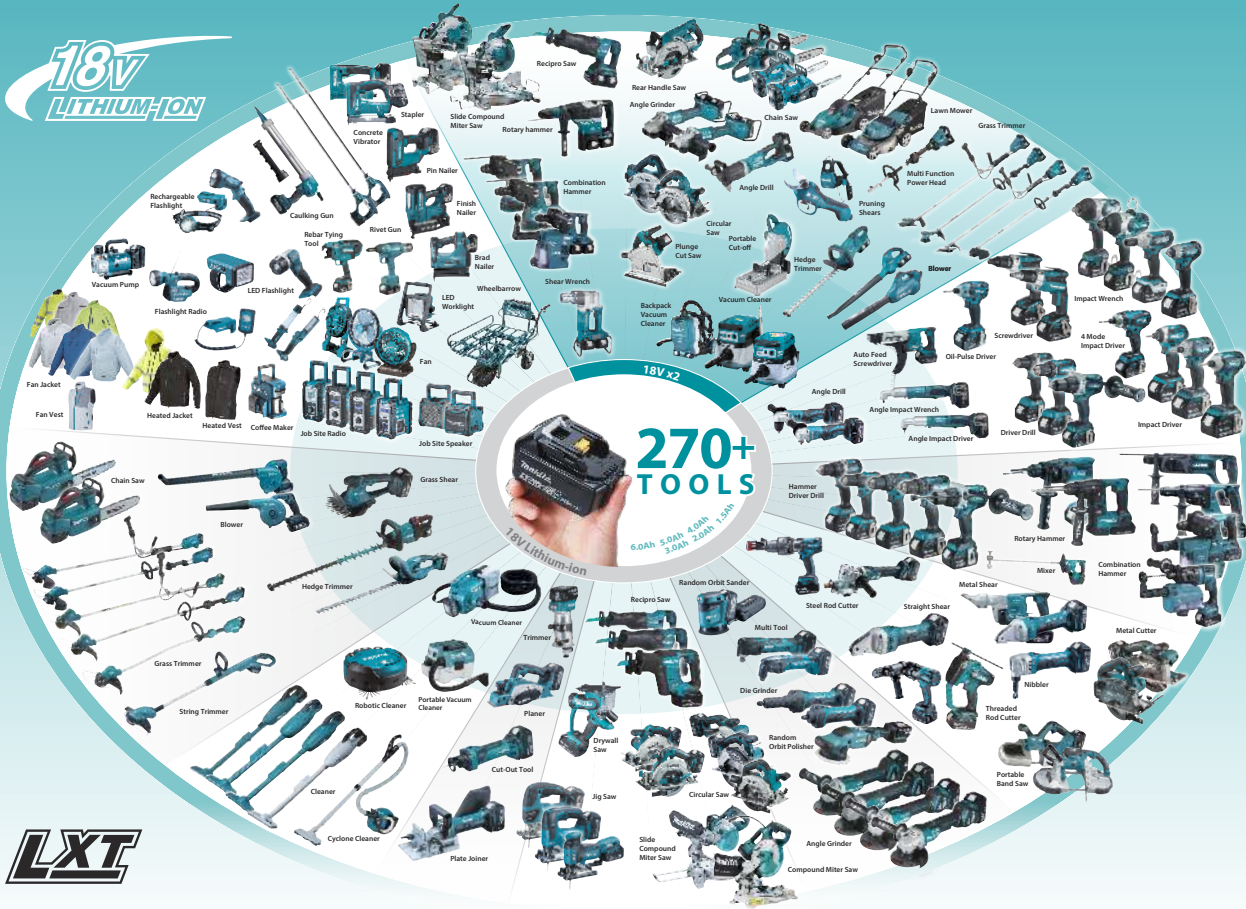
12V_{max}
LITHIUM-ION



CXT

Expand Your Lithium Line Up

18V_{MAX}
LITHIUM-ION



LXT

Makita Corporation

3-11-8 Sumiyoshi-cho, Anjo, Aichi, 446-8502 Japan

PRINTED IN JAPAN 201907