

DESIGN RADIATOR VALVES TWIN SERIES



arredoalvola®

The arredoalvola radiator valves is the design line specifically developed for radiators and towel rails. High quality of products, sophisticated style, variety of models and different types of finishing allow to perfectly and elegantly harmonize with any style of interior decoration with the precise intention to emphasise the beauty of the technology within the everyday use of our products.

Valves are available in straight or angle form with male thread. Pipe threads are according EN-ISO 228/1.

Technical characteristics:

| Technical features | Symbol | Values |
|----------------------------|--------|-------------------------|
| Medium | | Water/water with glycol |
| Max. glycol percentage | % | 30% |
| Dimensions | DN | 15 |
| Max. static pressure | PN | 10 bar |
| Max. differential pressure | dP | 0,8 bar [80 kPa] |
| Max. temperature | t max | 110 °C |

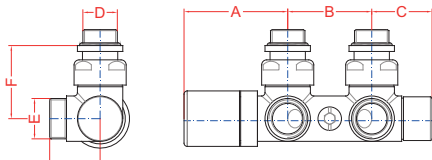
| Element | Material |
|----------------------------|-------------------------|
| Body valves | Brass EN12165-CW 617N-M |
| Rubber components to seal: | EPDM peroxide |
| Steel components | INOX AISI302 |
| Plastic components: | ABS |
| Other brass components | Brass EN12164-CW 617N-M |

Standard:

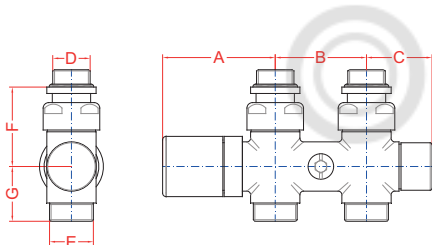
All technical characteristics are provided according the European standard EN 215 "Thermostatic radiator valves. Requirements and test methods".

DESIGN RADIATOR VALVES TWIN SERIES

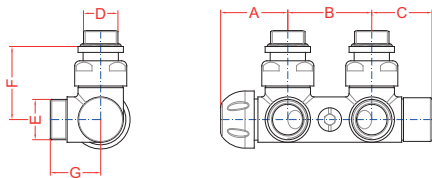
Models:



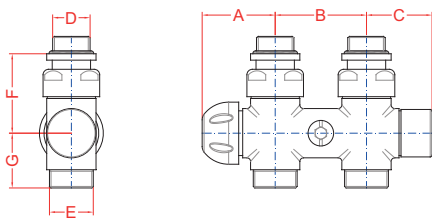
SB = for bitube systems (without by-pass).



SB = for bitube systems (without by-pass).



SB = for bitube systems (without by-pass).



SB = for bitube systems (without by-pass).

TWIN-THERMO SERIES

V421

Thermostatic mono/bitube angle H valve with manual handle for copper or plastic pipe. Body contains thermostatic valve and lockshield valve. Color finishing brass body. Distance between connections 50 mm. Connection for thermostatic head M30x1,5.

| DN | D | E | A | B | C | F | G | Weight | Kvs | Code |
|----|------|---------|----|----|----|----|----|--------|-------------------|-------------------|
| | | | mm | mm | mm | mm | mm | kg | m ³ /h | |
| 15 | 1/2" | 24-19 | 62 | 50 | 36 | 44 | 30 | 0.647 | 2.05 | V42100_* |
| 15 | 1/2" | 3/4" EK | 62 | 50 | 36 | 44 | 30 | 0.647 | 2.05 | V42110_* |
| 15 | 1/2" | 24-19 | 62 | 50 | 36 | 44 | 30 | 0.647 | 2.05 | V42100_SB* |
| 15 | 1/2" | 3/4" EK | 62 | 50 | 36 | 44 | 30 | 0.647 | 2.05 | V42110_SB* |

V425

Thermostatic mono/bitube straight H valve with manual handle for copper or plastic pipe. Body contains thermostatic valve and lockshield valve. Color finishing brass body. Distance between connections 50 mm. Connection for thermostatic head M30x1,5.

| DN | D | E | A | B | C | F | G | Weight | Kvs | Code |
|----|------|---------|----|----|----|----|----|--------|-------------------|-------------------|
| | | | mm | mm | mm | mm | mm | kg | m ³ /h | |
| 15 | 1/2" | 24-19 | 62 | 50 | 36 | 44 | 30 | 0.684 | 2.10 | V42500_* |
| 15 | 1/2" | 3/4" EK | 62 | 50 | 36 | 44 | 30 | 0.684 | 2.10 | V42510_* |
| 15 | 1/2" | 24-19 | 62 | 50 | 36 | 44 | 30 | 0.684 | 2.10 | V42500_SB* |
| 15 | 1/2" | 3/4" EK | 62 | 50 | 36 | 44 | 30 | 0.684 | 2.10 | V42510_SB* |

V371

Thermostatic mono/bitube angle H valve with protection cap for copper or plastic pipe. Body contains thermostatic valve and lockshield valve. Color finishing brass body. Distance between connections 50 mm. Connection for thermostatic head M30x1,5.

| DN | D | E | A | B | C | F | G | Weight | Kvs | Code |
|----|------|---------|----|----|----|----|----|--------|------|-------------------|
| | | | mm | mm | mm | mm | mm | kg | v | |
| 15 | 1/2" | 24-19 | 40 | 50 | 36 | 44 | 30 | 0.634 | 2.05 | V37100_* |
| 15 | 1/2" | 3/4" EK | 40 | 50 | 36 | 44 | 30 | 0.634 | 2.05 | V37110_* |
| 15 | 1/2" | 24-19 | 40 | 50 | 36 | 44 | 30 | 0.634 | 2.05 | V37100_SB* |
| 15 | 1/2" | 3/4" EK | 40 | 50 | 36 | 44 | 30 | 0.634 | 2.05 | V37110_SB* |

V375

Thermostatic mono/bitube straight H valve with protection cap for copper or plastic pipe. Body contains thermostatic valve and lockshield valve. Color finishing brass body. Distance between connections 50 mm. Connection for thermostatic head M30x1,5.

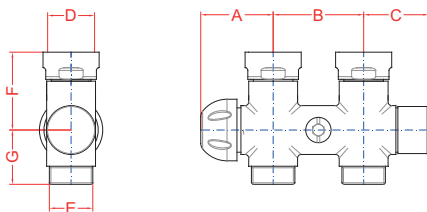
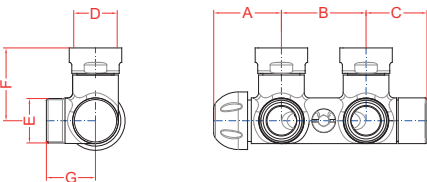
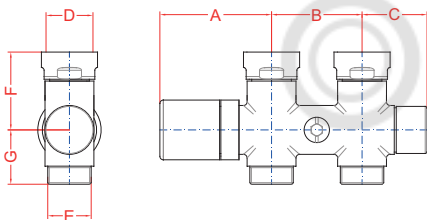
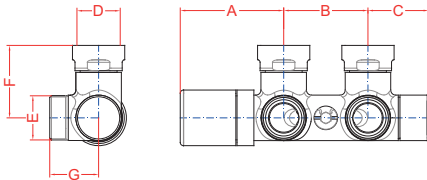
| DN | D | E | A | B | C | F | G | Weight | Kvs | Code |
|----|------|---------|----|----|----|----|----|--------|-------------------|-------------------|
| | | | mm | mm | mm | mm | mm | kg | m ³ /h | |
| 15 | 1/2" | 24-19 | 40 | 50 | 36 | 44 | 30 | 0.671 | 2.10 | V37500_* |
| 15 | 1/2" | 3/4" EK | 40 | 50 | 36 | 44 | 30 | 0.671 | 2.10 | V37510_* |
| 15 | 1/2" | 24-19 | 40 | 50 | 36 | 44 | 30 | 0.671 | 2.10 | V37500_SB* |
| 15 | 1/2" | 3/4" EK | 40 | 50 | 36 | 44 | 30 | 0.671 | 2.10 | V37510_SB* |

* It is necessary to specify the type of finishing at the end of code. For example for chrome: **V37110B**.



DESIGN RADIATOR VALVES TWIN SERIES

Models:



V423

Thermostatic mono/bitube angle H valve with manual handle for copper or plastic pipe. Body contains thermostatic valve and lockshield valve. Color finishing brass body. Distance between connections 50 mm. Flat seat connection. Connection for thermostatic head M30x1,5.

| DN | D | E | A | B | C | F | G | Weight | Kvs | Code |
|----|--------|---------|----|----|----|----|----|--------|-------------------|-----------------|
| | | | mm | mm | mm | mm | mm | kg | m ³ /h | |
| 15 | 3/4" F | 24-19 | 62 | 50 | 36 | 44 | 30 | 0.647 | 2.05 | V42300_* |
| 15 | 3/4" F | 3/4" EK | 62 | 50 | 36 | 44 | 30 | 0.647 | 2.05 | V42310_* |

V427

Thermostatic mono/bitube straight H valve with manual handle for copper or plastic pipe. Body contains thermostatic valve and lockshield valve. Color finishing brass body. Distance between connections 50 mm. Flat seat connection. Connection for thermostatic head M30x1,5.

| DN | D | E | A | B | C | F | G | Weight | Kvs | Code |
|----|--------|---------|----|----|----|----|----|--------|-------------------|-----------------|
| | | | mm | mm | mm | mm | mm | kg | m ³ /h | |
| 15 | 3/4" F | 24-19 | 62 | 50 | 36 | 44 | 30 | 0.684 | 2.10 | V42700_* |
| 15 | 3/4" F | 3/4" EK | 62 | 50 | 36 | 44 | 30 | 0.684 | 2.10 | V42710_* |

V373

Thermostatic mono/bitube angle H valve with protection cap for copper or plastic pipe. Body contains thermostatic valve and lockshield valve. Color finishing brass body. Distance between connections 50 mm. Flat seat connection. Connection for thermostatic head M30x1,5.

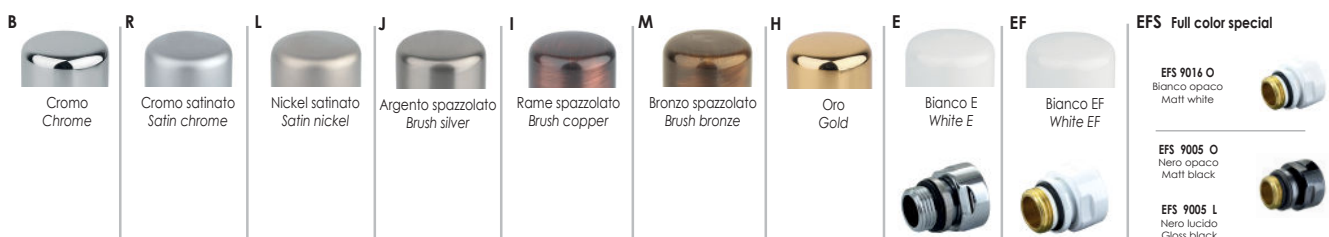
| DN | D | E | A | B | C | F | G | Weight | Kvs | Code |
|----|--------|---------|----|----|----|----|----|--------|-------------------|-----------------|
| | | | mm | mm | mm | mm | mm | kg | m ³ /h | |
| 15 | 3/4" F | 24-19 | 40 | 50 | 36 | 44 | 30 | 0.634 | 2.05 | V37300_* |
| 15 | 3/4" F | 3/4" EK | 40 | 50 | 36 | 44 | 30 | 0.634 | 2.05 | V37310_* |

V377

Thermostatic mono/bitube straight H valve with protection cap for copper or plastic pipe. Body contains thermostatic valve and lockshield valve. Color finishing brass body. Distance between connections 50 mm. Flat seat connection. Connection for thermostatic head M30x1,5.

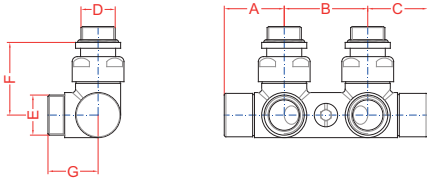
| DN | D | E | A | B | C | F | G | Weight | Kvs | Code |
|----|--------|---------|----|----|----|----|----|--------|-------------------|-----------------|
| | | | mm | mm | mm | mm | mm | kg | m ³ /h | |
| 15 | 3/4" F | 24-19 | 40 | 50 | 36 | 44 | 30 | 0.671 | 2.10 | V37700_* |
| 15 | 3/4" F | 3/4" EK | 40 | 50 | 36 | 44 | 30 | 0.671 | 2.10 | V37710_* |

* It is necessary to specify the type of finishing at the end of code. For example for chrome: **V37310B**.

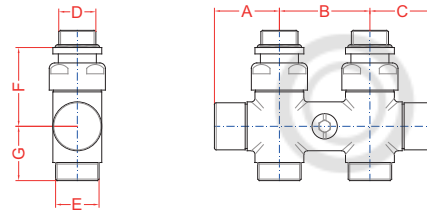


DESIGN RADIATOR VALVES TWIN SERIES

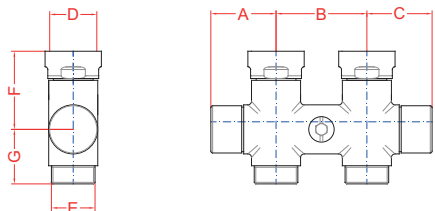
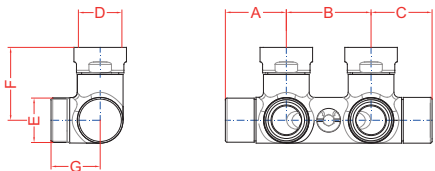
Models:



SB = for bitube systems (without by-pass).



SB = for bitube systems (without by-pass).



TWIN SERIES

V481

Manual mono/bitube angle H valve brass cap for copper or plastic pipe. Body contains double lockshield. Color finishing brass body. Distance between connections 50 mm.

| DN | D | E | A | B | C | F | G | Weight | Kvs | Code |
|----|------|---------|----|----|----|----|----|--------|-------------------|-------------------|
| | | | mm | mm | mm | mm | mm | kg | m ³ /h | |
| 15 | 1/2" | 24-19 | 36 | 50 | 36 | 44 | 30 | 0.646 | 2.36 | V48100_* |
| 15 | 1/2" | 3/4" EK | 36 | 50 | 36 | 44 | 30 | 0.646 | 2.36 | V48110_* |
| 15 | 1/2" | 24-19 | 36 | 50 | 36 | 44 | 30 | 0.646 | 2.36 | V48100_SB* |
| 15 | 1/2" | 3/4" EK | 36 | 50 | 36 | 44 | 30 | 0.646 | 2.36 | V48110_SB* |

V485

Manual mono/bitube straight H valve with brass cap for copper or plastic pipe. Body contains double lockshield. Color finishing brass body. Distance between connections 50 mm.

| DN | D | E | A | B | C | F | G | Weight | Kvs | Code |
|----|------|---------|----|----|----|----|----|--------|-------------------|-------------------|
| | | | mm | mm | mm | mm | mm | kg | m ³ /h | |
| 15 | 1/2" | 24-19 | 36 | 50 | 36 | 44 | 30 | 0.683 | 2.10 | V48500_* |
| 15 | 1/2" | 3/4" EK | 36 | 50 | 36 | 44 | 30 | 0.683 | 2.10 | V48510_* |
| 15 | 1/2" | 24-19 | 36 | 50 | 36 | 44 | 30 | 0.683 | 2.10 | V48500_SB* |
| 15 | 1/2" | 3/4" EK | 36 | 50 | 36 | 44 | 30 | 0.683 | 2.10 | V48510_SB* |

TWIN_F SERIES

V483

Manual mono/bitube angle H valve with brass cap for copper or plastic pipe. Body contains double lockshield. Color finishing brass body. Distance between connections 50 mm. Flat seat connection.

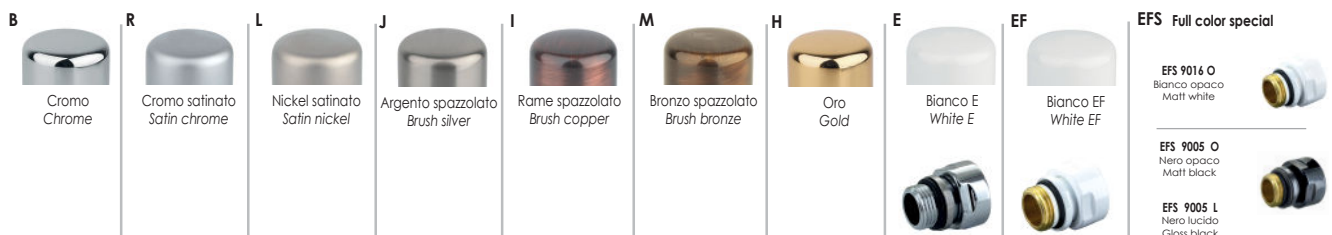
| DN | D | E | A | B | C | F | G | Weight | Kvs | Code |
|----|--------|---------|----|----|----|----|----|--------|-------------------|-----------------|
| | | | mm | mm | mm | mm | mm | kg | m ³ /h | |
| 15 | 3/4" F | 24-19 | 36 | 50 | 36 | 44 | 30 | 0.646 | 2.36 | V48300_* |
| 15 | 3/4" F | 3/4" EK | 36 | 50 | 36 | 44 | 30 | 0.646 | 2.36 | V48310_* |

V487

Manual mono/bitube straight H valve with brass cap for copper or plastic pipe. Body contains double lockshield. Color finishing brass body. Distance between connections 50 mm. Flat seat connection.

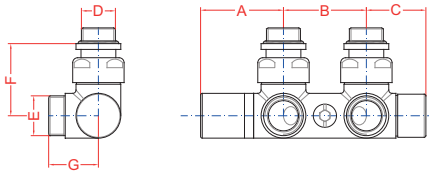
| DN | D | E | A | B | C | F | G | Weight | Kvs | Code |
|----|--------|---------|----|----|----|----|----|--------|-------------------|-----------------|
| | | | mm | mm | mm | mm | mm | kg | m ³ /h | |
| 15 | 3/4" F | 24-19 | 36 | 50 | 36 | 44 | 30 | 0.683 | 2.10 | V48700_* |
| 15 | 3/4" F | 3/4" EK | 36 | 50 | 36 | 44 | 30 | 0.683 | 2.10 | V48710_* |

* It is necessary to specify the type of finishing at the end of code. For example for chrome: **V48510B**.

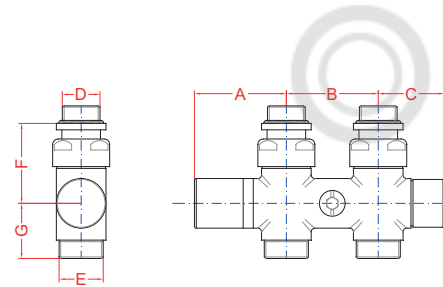


DESIGN RADIATOR VALVES TWIN SERIES

Models:



SB = for bitube systems (without by-pass).



SB = for bitube systems (without by-pass).

TWIN-06 SERIES

V42106

Thermostatic mono/bitube angle H valve with brass handle for copper or plastic pipe. Body contains thermostatic valve and lockshield valve. Color finishing brass body. Distance between connections 50 mm. Connection for thermostatic head M30x1,5 with adapter art. A400.

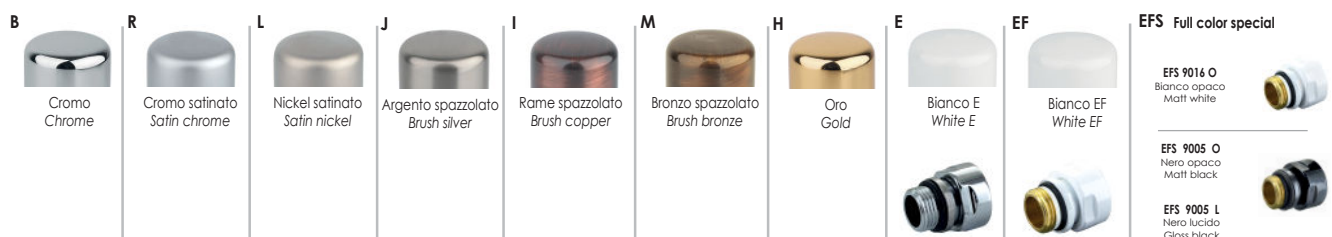
| DN | D | E | A | B | C | F | G | Weight | Kvs | Code |
|----|------|---------|----|----|----|----|----|--------|-------------------|---------------------|
| | | | mm | mm | mm | mm | mm | kg | m ³ /h | |
| 15 | 1/2" | 24-19 | 50 | 50 | 36 | 44 | 30 | 0.647 | 2.05 | V4210611_* |
| 15 | 1/2" | 3/4" EK | 50 | 50 | 36 | 44 | 30 | 0.647 | 2.05 | V4210612_* |
| 15 | 1/2" | 24-19 | 50 | 50 | 36 | 44 | 30 | 0.647 | 2.05 | V4210611_SB* |
| 15 | 1/2" | 3/4" EK | 50 | 50 | 36 | 44 | 30 | 0.647 | 2.05 | V4210612_SB* |

V42506

Thermostatic mono/bitube straight H valve with brass handle for copper or plastic pipe. Body contains thermostatic valve and lockshield valve. Color finishing brass body. Distance between connections 50 mm. Connection for thermostatic head M30x1,5 with adapter art. A400.

| DN | D | E | A | B | C | F | G | Weight | Kvs | Code |
|----|------|---------|----|----|----|----|----|--------|-------------------|---------------------|
| | | | mm | mm | mm | mm | mm | kg | m ³ /h | |
| 15 | 1/2" | 24-19 | 50 | 50 | 36 | 44 | 30 | 0.684 | 2.10 | V4250611_* |
| 15 | 1/2" | 3/4" EK | 50 | 50 | 36 | 44 | 30 | 0.684 | 2.10 | V4250612_* |
| 15 | 1/2" | 24-19 | 50 | 50 | 36 | 44 | 30 | 0.684 | 2.10 | V4250611_SB* |
| 15 | 1/2" | 3/4" EK | 50 | 50 | 36 | 44 | 30 | 0.684 | 2.10 | V4250612_SB* |

* It is necessary to specify the type of finishing at the end of code. For example for chrome: **V48510B**.



DESIGN RADIATOR VALVES TWIN SERIES

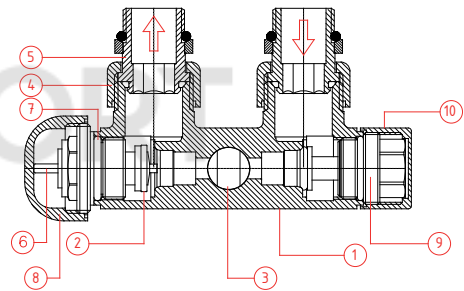
Valve application:

The thermostatic mono/bitube H radiator valves are designed to be equipped with a presetting thermostatic spindle which allows regulation of the flow rate to the radiator, achieving balance of the circuit. The single valve body contains both elements: thermostatic valve and lockshield. The valves are predisposed for mounting the thermostatic head in order to maintain a constant set temperature value, resulting in a considerable energy saving. The lockshield radiator valves are used for shut off the radiator in case of maintenance and regulating the flow rate in the case of thermostatic valves without presetting or manual valves.

Cross section:

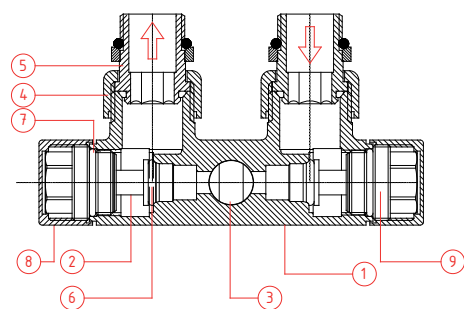
Thermostatic TWIN valves

| N | Details |
|----|---------------------|
| 1 | Valve body |
| 2 | Valve disc |
| 3 | By-pass |
| 4 | Union nut |
| 5 | Tailpiece |
| 6 | Valve stem |
| 7 | O-Ring |
| 8 | Plastic cap |
| 9 | Lockshield headwork |
| 10 | Lockshield cap |



Manual TWIN valves

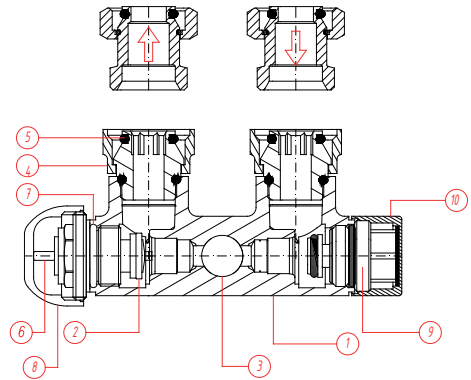
| N | Details |
|---|---------------------|
| 1 | Valve body |
| 2 | Shut off spindle |
| 3 | By-pass |
| 4 | Union nut |
| 5 | Tailpiece |
| 6 | O-Ring |
| 7 | O-Ring |
| 8 | Brass cap |
| 9 | Lockshield headwork |



DESIGN RADIATOR VALVES
TWIN SERIES

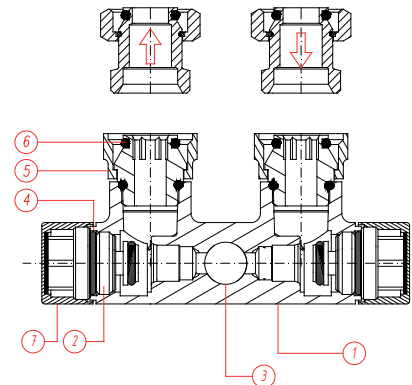
Thermostatic TWIN_F valves

| N | Details |
|----|---------------------|
| 1 | Valve body |
| 2 | Valve disc |
| 3 | By-pass |
| 4 | Union nut |
| 5 | O-Ring |
| 6 | Valve stem |
| 7 | O-Ring |
| 8 | Plastic cap |
| 9 | Lockshield headwork |
| 10 | Lockshield cap |



Manual TWIN_F valves

| N | Details |
|---|------------------|
| 1 | Valve body |
| 2 | Shut off spindle |
| 3 | By-pass |
| 4 | O-Ring |
| 5 | Union nut |
| 6 | O-Ring |
| 7 | Lockshield cap |



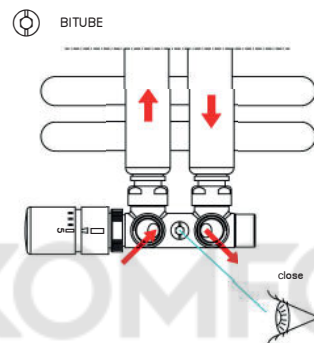
DESIGN RADIATOR VALVES TWIN SERIES

Configurations of the valve:

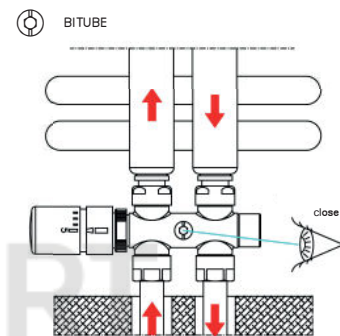
Thermostatic TWIN valves

The mono/bitube H radiator valve can work as in one pipe systems and in two pipe systems (excluding models without by-pass **SB** which are working only in two pipe systems).

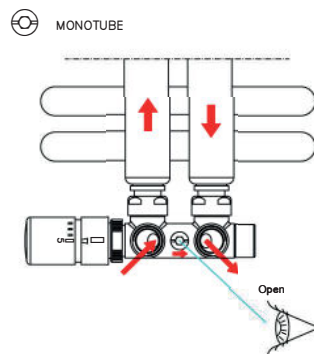
Angle version



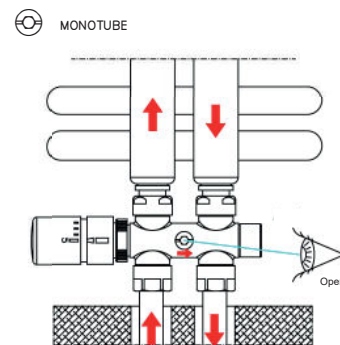
Straight version



Angle version



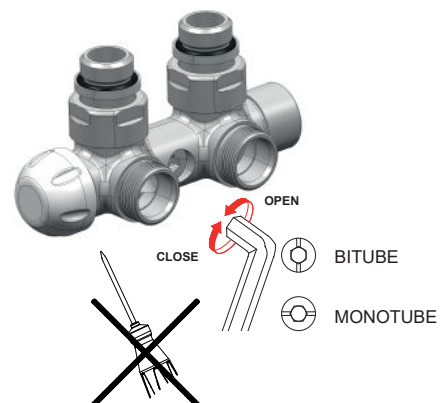
Straight version



The by-pass of the valve allowed flow to pass in order of radiator maintenance allowing the system to work in the moment of disconnection of one of the consumers.

The by-pass construction of the valve allowed to include bath radiators in the loop of underfloor heating systems.

In order to change configuration of the valve from monotube to bitube close the by-pass using 6 mm Allen key rotating it in vertical direction as shown in the picture. Open the by-pass in order to make monotube configuration.

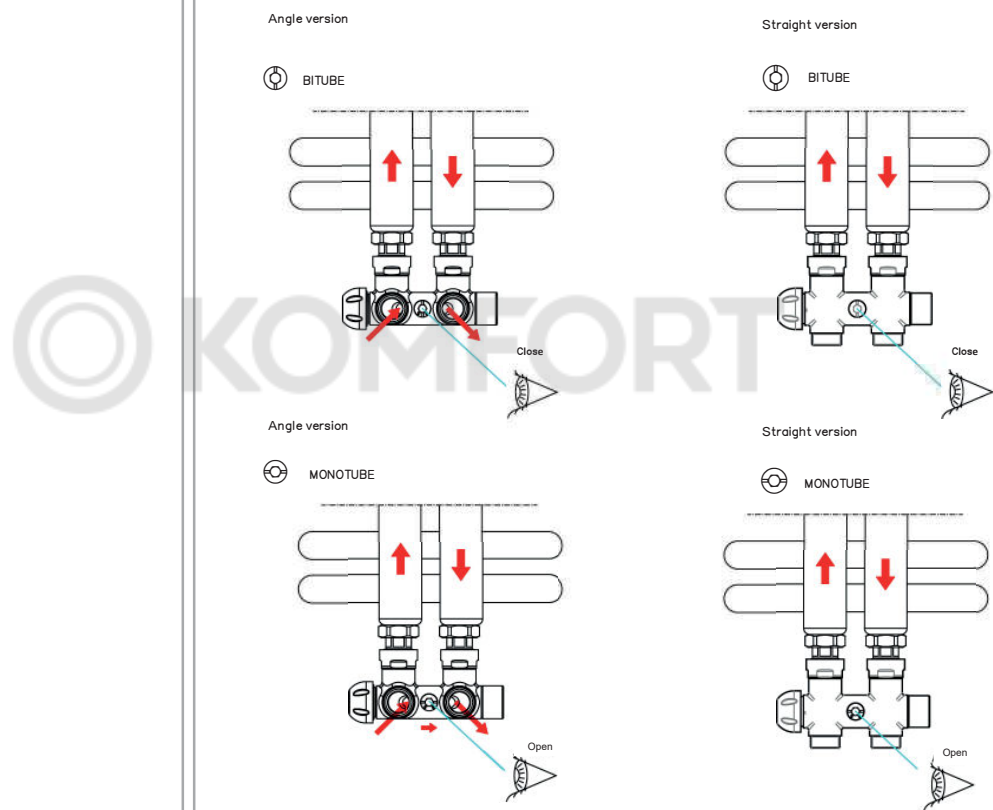


DESIGN RADIATOR VALVES TWIN SERIES

Configurations of the valve:

Thermostatic TWIN F-THERMO valves

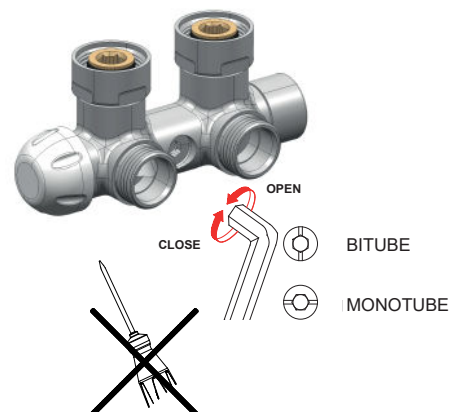
The mono/bitube H radiator valve can work as in one pipe systems and in two pipe systems.



The by-pass of the valve allowed flow to pass in order of radiator maintenance allowing the system to work in the moment of disconnection of one of the consumers.

The by-pass construction of the valve allowed to include bath radiators in the loop of underfloor heating systems.

In order to change configuration of the valve from monotube to bitube close the by-pass using 6 mm Allen key rotating it in vertical direction as shown in the picture. Open the by-pass in order to make monotube configuration.

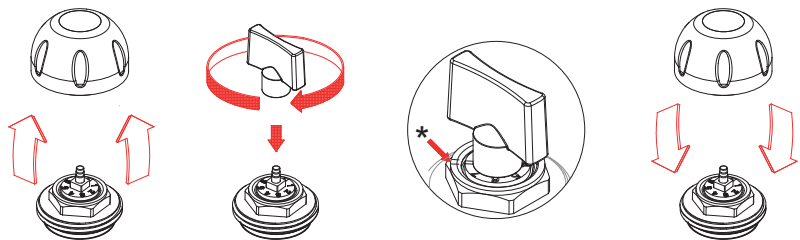


DESIGN RADIATOR VALVES TWIN SERIES

Operating principle of the valve:

Thermostatic models with presetting

The thermostatic valves are equipped with pre-setting headwork that allows to balance the flow of the circuit. The flow regulation consists of a calibrated limitation of the valve passage obtained by rotating the selector on the valve. The hydraulic characteristics connected to each preset are shown at the end of this technical data sheet.



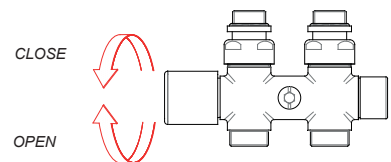
In order to install preset position on the valve follow instructions below:

- remove the cap / handwheel (1);
- close completely the presetting ring nut, using the key (2); then reopen to the position of pre-setting expected by the project or selected on the specific diagram, matching the number to the reference sign (*); for the maximum (full open) position take another full turn of the ring setting the reference mark on the number 7;
- reassemble the cap / handwheel (3) so as to obtain the valve with presetting (4).

Manual valves:

Manual valves regulate the flow rate through manual shutter adjustment, rotating manually the handwheel on the body of the valve.

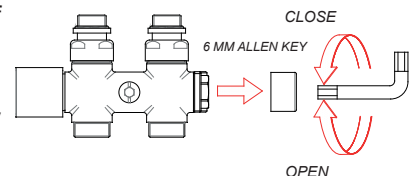
Rotating the handwheel clockwise, you close the valve, while turning the handwheel in the counterclockwise direction, you open the valve.



Lockshields:

To shut off the valve in case of maintenance:

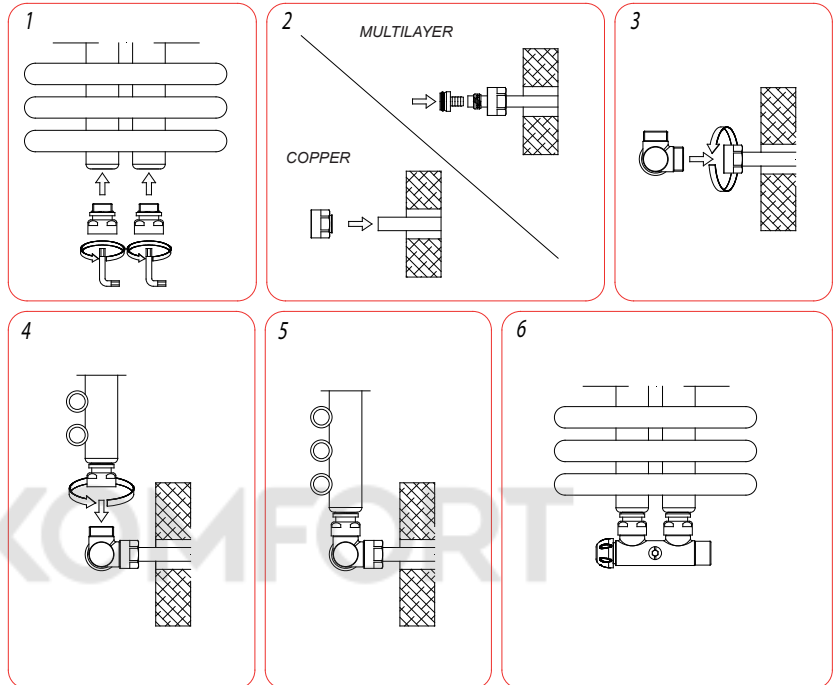
- remove the cap;
- close the valve using 6 mm Allen key rotating it in clockwise direction;
- install the cap.



The balancing with lockshield can be made starting from a completely closed valve and opening it proportionally up to desired flow rate. The complete opening is obtained with about 4 turns.

DESIGN RADIATOR VALVES TWIN SERIES

Installation of the valve:



The thermostatic/manual valve should be installed in the bottom part of the radiator according flow direction instructions. Valves are available in straight or angled version with Eurocone (EK) connection. The radiator connection is made through the tail piece connection for TWIN series or valve nut and different types of adapters (Art. A554-A553) for TWIN_F series .

- close the riser and drain the water from the radiator;
- For TWIN_F series install the adapters (A554 or A553) in the radiator connections if necessary. Screw the valve body to the radiator;
- For TWIN series remove the nut with the tail piece from the valve, screw the union onto the radiator after having threaded it with hemp or PTFE tapes (2). This last step is not necessary if the tail piece is equipped with a seal;
- perform a precise and perpendicular cut of the tube, free from burrs, using a special pipe cutter;
- give the tube its original cylindrical shape to facilitate the insertion of the hose holder;
- check that there are no traces of burr and dirt inside the tube;
- assemble the elements that make up the joint according to the order shown in the picture on the left, paying attention to the type of pipe and therefore the connection that is being used (1);
- insert the pipe with its hose connector into the valve seat, avoiding to pinch the sealing o-ring. Fit the nut and screw it by hand as far as possible, then use the appropriate key to screw it all the way in (3);
- screw the valve body to the radiator (4).

DESIGN RADIATOR VALVES TWIN SERIES

Thermostatic heads:

The thermostatic heads are used with thermostatically controlled valves to regulate the room temperature automatically.
The following models are compatible with the thermostatic valves:

| Model | Sensor type | Control type | Connection size | Setting range | Max. response time | Color | Code |
|-------|-------------|--------------|-----------------|---------------|--------------------|--------|----------|
| A409 | liquid | built-in | M30x1,5 | 6.5 to 28 °C | 13 min | vary | A40900_* |
| A499 | liquid | built-in | M30x1,5 | 7 to 30 °C | 40 min | chrome | A49900B |
| A498 | liquid | built-in | M30x1,5 | 6.5 to 28 °C | 23 min | vary | A49800_* |
| A497 | liquid | built-in | M30x1,5 | 6 to 28 °C | 16 min | chrome | A49700B |
| A425 | liquid | built-in | M30x1,5 | 7 to 30 °C | 25 min | chrome | A42500B |

* In order to specify finishing instead of _ add at the end of code desired finishing (according available colors, see the list of model). Example for chrome: **A40900B**.

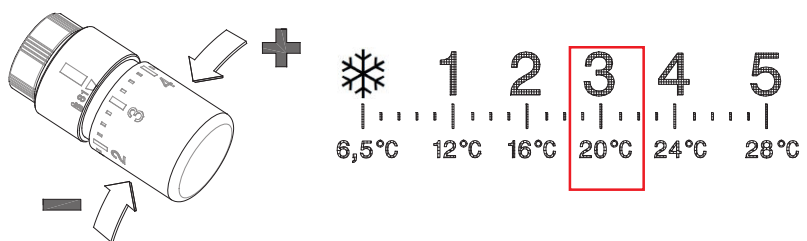
Note: For TWIN_06 series use the adaptor **A400** (see accessories).

Operating principle:

The thermostatic head contains a temperature sensitive element (liquid). Together with the thermostatic valve it provides proportional temperature regulation in room where it is install. When the ambient temperature is higher than was preset with scale settings, the volume of liquid in thermostatic head expands and push the stem of the valve on order to close the flow rate and thereby reducing its heat transfer. As the temperature decrease it is starts the opposite process.

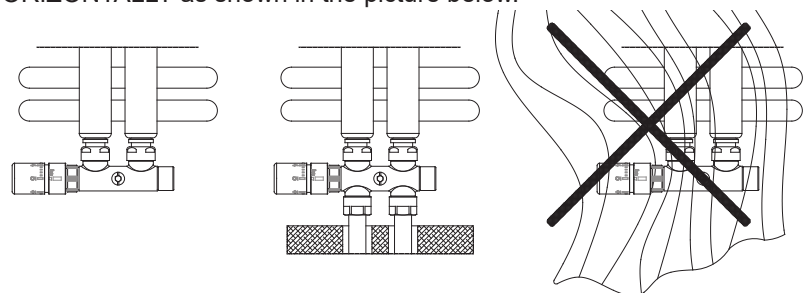
Note: In the case of long periods of absence specially during winter, set the thermostatic head to the antifreeze position ❄ (which corresponds to the minimum temperature from setting range). During the summer season however it is advisable to set the thermostatic to set the n°5 setting or with the valve fully open.

Regulation of temperature with thermostatic head:



! Attention: The thermostatic head does not use for shutoff the valve. In case of disassembling of heat emitter take off the thermostatic head and use the protection cap or handle.

It is essential that the thermostat is placed in the correct way: **HORIZONTALLY** as shown in the picture below.



Note: It is not permitted to mount the thermostatic head vertically, in niches, and should not be covered by curtains. The sensitive element should not be placed in direct sunlight exposure.

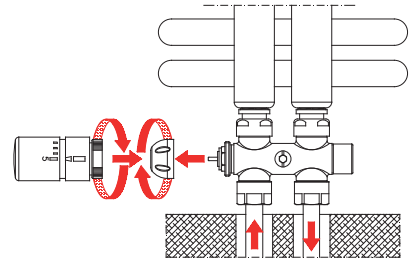
DESIGN RADIATOR VALVES TWIN SERIES

Installation of the thermostatic head:

TWIN-THERMO series

The thermostatic head should be installed in a horizontal position.

- take off the protection cap/handle.
- select PRESETTING 5 on the thermostatic head.
- install the thermostatic head by screwing the ring nut manually.

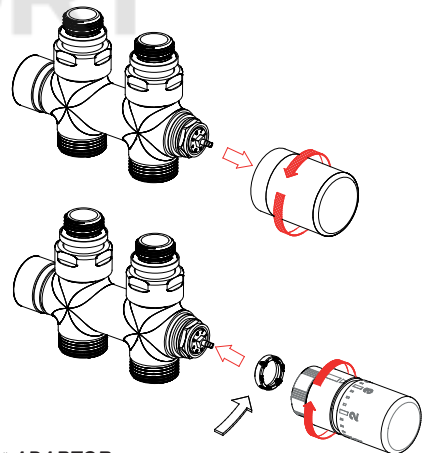


Note: Cap can be used for manual control during the installation and it should be used as isolation device.

TWIN-06 series

In order to install thermostatic head follow instructions below:

- take off the brass handle of the valve;
- take off the threaded element using CH 20 rotating it in the counterclockwise direction;
- install adaptor **A400** (see in the accesoreies) screwing the ring nut manually;
- fix the adaptor with screw using 2 mm Allen key rotating it in clockwise direction;
- select PRESETTING "5" on the thermostatic head;
- install the thermostatic head by *ADAPTOR screwing the ring nut manually.



DESIGN RADIATOR VALVES TWIN SERIES

Adaptors:

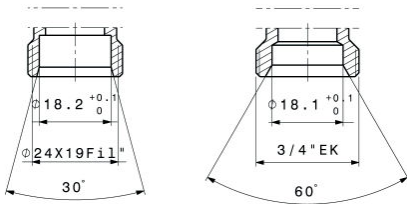
* Adaptors are used with V421, V425, V371, V375, V481, V485, V42106, V42506, V423, V427, V373, V377, V483 and V487 valve models.

⚠ Attention: To install the Arredoalvola series adaptors it is necessary to pay attention in order not to damage the surface finish, use suitable keys. Use the tightening torque specified in the data sheet of the chosen adapter.

COPPER PIPES

| Model | Description | Max. pressure | Size | Connection | Code |
|-------|---|---------------|------|------------|--------------------|
| | Adaptor for copper pipe, exagonal nut. | 10 bar | 10 | 24-19 | A33106_* |
| | | | 12 | 24-19 | A33107_* |
| | | | 14 | 24-19 | A33108_* |
| | | | 15 | 24-19 | A33109_* |
| | | | 16 | 24-19 | A33110_* |
| | | | 18 | 24-19 | A33111_* |
| | Adaptor for copper pipe, cylindrical nut. | 10 bar | 10 | 24-19 | A58406_* |
| | | | 12 | 24-19 | A58407_* |
| | | | 14 | 24-19 | A58408_* |
| | | | 15 | 24-19 | A58409_* |
| | | | 16 | 24-19 | A58410_* |
| | | | 18 | 24-19 | A58411_* |
| | Seal kit for copper pipe. | - | 10 | 24-19 | A33306A |
| | | | 12 | 24-19 | A33307A |
| | | | 14 | 24-19 | A33308A |
| | | | 15 | 24-19 | A33309A |
| | | | 16 | 24-19 | A33310A |
| | Adaptor for copper pipe, brass ogive. | 10 bar | 15 | 24-19 | A59300_* |
| | | | | | |
| | Adaptor for copper pipe. | 10 bar | 10 | 3/4"EK | A43301_* |
| | | | 12 | 3/4"EK | A43302_* |
| | | | 14 | 3/4"EK | A43303_* |
| | | | 15 | 3/4"EK | A43304_* |
| | | | 16 | 3/4"EK | A43305_* |
| | Adaptor for copper pipe. | 10 bar | 10 | 3/4"EK | A33106_ *EK |
| | | | 12 | 3/4"EK | A33107_ *EK |
| | | | 14 | 3/4"EK | A33108_ *EK |
| | | | 15 | 3/4"EK | A33109_ *EK |
| | | | 16 | 3/4"EK | A33110_ *EK |
| | | | 18 | 3/4"EK | A33111_ *EK |

Type of connections:



* It is necessary to specify the type of finishing at the end of code. For example for chrome: **A33107B**.

| | | | | | | | | | |
|--------------------------|---|--|---|--|--|----------------------|------------------------------|---------------------------------|---|
| B Cromo Chrome | R Cromo satinato Satin chrome | L Nickel satinato Satin nickel | J Argento spazzolato Brush silver | I Rame spazzolato Brush copper | M Bronzo spazzolato Brush bronze | H Oro Gold | E Bianco E White E | EF Bianco EF White EF | EFS Full color special EFS 9016 O Bianco opaco Matt white EFS 9005 O Nero opaco Matt black EFS 9005 L Nero lucido Glass black |
|--------------------------|---|--|---|--|--|----------------------|------------------------------|---------------------------------|---|






DESIGN RADIATOR VALVES TWIN SERIES

Adaptors:














* Adaptors are used with V421, V425, V371, V375, V481, V485, V42106, V42506, V423, V427, V373, V377, V483 and V487 valve models.

⚠ Attention: To install the ArredoValvola series adaptors it is necessary to pay attention in order not to damage the surface finish, use suitable keys. Use the tightening torque specified in the data sheet of the chosen adaptor.

MULTILAYER PIPES

| Model | Description | Max. pressure | Size | Connection | Code | | | | | | | | |
|---|-------------|---|--------|---|--------|--|--------|------|-------|-----------------|---|--------|---|
|  | A555 | Adaptor for multilayer pipe, exagonal nut. | 10 bar | 14x2 | 24-19 | A55501_* | | | | | | | |
| | | | | 16x2 | 24-19 | A55502_* | | | | | | | |
| | | | | 16x2.25 | 24-19 | A55503_* | | | | | | | |
| | | | | 16.2x2.6 | 24-19 | A55513_* | | | | | | | |
| | | | | 17x2 | 24-19 | A55504_* | | | | | | | |
| | | | | 18x2 | 24-19 | A55506_* | | | | | | | |
| | | | | 20x2 | 24-19 | A55510_* | | | | | | | |
| | | | | 20x2.25 | 24-19 | A55511_* | | | | | | | |
| | | | | 20x2.5 | 24-19 | A55512_* | | | | | | | |
| | | | | 14x2 | 24-19 | A58501_* | | | | | | | |
| | | | | 16x2 | 24-19 | A58502_* | | | | | | | |
| | | | | 16x2.25 | 24-19 | A58503_* | | | | | | | |
|  | A585 | Adaptor for multilayer pipe, cylindrical nut. | 10 bar | 16.2x2.6 | 24-19 | A58513_* | | | | | | | |
| | | | | 17x2 | 24-19 | A58504_* | | | | | | | |
| | | | | 18x2 | 24-19 | A58506_* | | | | | | | |
| | | | | 20x2 | 24-19 | A58510_* | | | | | | | |
| | | | | 20x2.25 | 24-19 | A58511_* | | | | | | | |
| | | | | 20x2.5 | 24-19 | A58512_* | | | | | | | |
| | | | |  | A332 | Exagonal nut for copper, PEX, multilayer pipe. | 10 bar | 16.8 | 24-19 | A33200_* | | | |
| | | | | | | | | | | |  | A33210 | Cylindrical nut for copper, PEX, multilayer pipe. |
| | | | | | | | | | | | | | |
|  | A587 | Adaptor for multilayer pipe. | 10 bar | 14x2 | 3/4"EK | A58701_* | | | | | | | |
| | | | | 16x2 | 3/4"EK | A58702_* | | | | | | | |
| | | | | 16x2.25 | 3/4"EK | A58703_* | | | | | | | |
| | | | | 17x2 | 3/4"EK | A58704_* | | | | | | | |
| | | | | 18x2 | 3/4"EK | A58706_* | | | | | | | |
| | | | | 20x2 | 3/4"EK | A58708_* | | | | | | | |
| | | | | 20x2.25 | 3/4"EK | A58709_* | | | | | | | |
| | | | | 20x2.5 | 3/4"EK | A58707_* | | | | | | | |

* It is necessary to specify the type of finishing at the end of code. For example for chrome: **A55502B**.

| B | R | L | J | I | M | H | E | EF | EFS Full color special |
|---|---|---|---|---|---|---|---|---|---|
|  |  |  |  |  |  |  |  |  |  |
| Cromo Chrome | Cromo satinato Satin chrome | Nickel satinato Satin nickel | Argento spazzolato Brush silver | Rame spazzolato Brush copper | Bronzo spazzolato Brush bronze | Oro Gold | Bianco E White E | Bianco EF White EF | EFS 9005 O Nero opaco Matt black |
| | | | | | | |  |  |  |
| | | | | | | | | | EFS 9005 L Nero lucido Glass black |




DESIGN RADIATOR VALVES TWIN SERIES

Adaptors:













* Adaptors are used with V421, V425, V371, V375, V481, V485, V42106, V42506, V423, V427, V373, V377, V483 and V487 valve models.

⚠ Attention: To install the ArredoValvola series adapters it is necessary to pay attention in order not to damage the surface finish, use suitable keys. Use the tightening torque specified in the data sheet of the chosen adapter.

PLASTIC PIPES


| Model | Description | Max. pressure | Size | Connection | Code |
|---|--|-----------------|---------|------------|-----------------|
|  A556 | Adaptor for plastic pipe, exagonal nut. | 10 bar | 12x2 | 24-19 | A55601_* |
| | | | 14x2 | 24-19 | A55602_* |
| | | | 15x2.5 | 24-19 | A55604_* |
| | | | 16x1.5 | 24-19 | A55605_* |
| | | | 16x2 | 24-19 | A55606_* |
| | | | 16x2.2 | 24-19 | A55607_* |
| | | | 17x2 | 24-19 | A55608_* |
| | | | 18x2 | 24-19 | A55610_* |
| | | | 18x2.5 | 24-19 | A55611_* |
| | | | 20x2 | 24-19 | A55613_* |
|  A586 | Adaptor for plastic pipe, cylindrical nut. | 10 bar | 20x2.5 | 24-19 | A55614_* |
| | | | 12x2 | 24-19 | A58601_* |
| | | | 14x2 | 24-19 | A58602_* |
| | | | 15x2.5 | 24-19 | A58604_* |
| | | | 16x2 | 24-19 | A58606_* |
| | | | 16x2.25 | 24-19 | A58607_* |
| | | | 17x2 | 24-19 | A58608_* |
| | | | 18x2 | 24-19 | A58610_* |
| | | | 18x2.5 | 24-19 | A58611_* |
| | | | 20x2 | 24-19 | A58613_* |
|  A588 | Adaptor for PEX pipe. | 10 bar | 20x2.5 | 24-19 | A58615_* |
| | | | 12x1.1 | 3/4"EK | A58810_* |
| | | | 12x2 | 3/4"EK | A58800_* |
| | | | 14x2 | 3/4"EK | A58801_* |
| | | | 15x2.5 | 3/4"EK | A58802_* |
| | | | 16x1.5 | 3/4"EK | A58811_* |
| | | | 16x2 | 3/4"EK | A58803_* |
| | | | 16x2.2 | 3/4"EK | A58804_* |
| | | | 17x2 | 3/4"EK | A58805_* |
| | | | 18x2 | 3/4"EK | A58806_* |
| 18x2.5 | 3/4"EK | A58807_* | | | |
| 20x2 | 3/4"EK | A58808_* | | | |
| 20x2.5 | 3/4"EK | A58809_* | | | |





* It is necessary to specify the type of finishing at the end of code. For example for chrome: **A55606B**.

| | | | | | | | | | |
|--|---|--|---|--|--|--|---|---|---|
| B  Cromo Chrome | R  Cromo satinato Satin chrome | L  Nickel satinato Satin nickel | J  Argento spazzolato Brush silver | I  Rame spazzolato Brush copper | M  Bronzo spazzolato Brush bronze | H  Oro Gold | E  Bianco E White E | EF  Bianco EF White EF | EFS Full color special EFS 9016 O Bianco opaco Matt white  EFS 9005 O Nero opaco Matt black  EFS 9005 L Nero lucido Glass black  |
|--|---|--|---|--|--|--|---|---|---|















DESIGN RADIATOR VALVES TWIN SERIES

Accessories and spare parts:









 **Attention:** The tightening torque of the screws must be less than 25 Nm.

| | Model | Description | Size | Connection | Code | |
|---|--------|--|-----------|------------|-------------------|-------------------|
|  | A353 | Thermostatic spindle with presetting. | 1/2" | M 30x1.5 | A35317TPS | |
| | | | | M 24x1.5 | A35325T | |
|  | A357 | Headwork for manual valves. | 1/2" | | A35711T | |
|  | A3570 | Headwork for lockshield valves. | 1/2" | M 24x1.5 | A35703T | |
|  | A343 | Adaptor for iron pipe. | 1/2" | 3/8"F | 24-19 | A34301_* |
| | | | | 1/2"F | 24-19 | A34302_* |
| | | | | 3/8"F | 3/4"EK | A34305_* |
| | | | | 1/2"F | 3/4"EK | A34306_* |
| | | | | 1/2"F NPT | 24-19 | A34302_NPT |
| | | | 1/2"F NPT | 3/4"EK | A34306_NPT | |
|  | A547 | Sleeving kit (pair). | 18-L70 | int. 50 mm | A54703_* | |
| | | | | int. 50 mm | A54700_* | |
| | | | | int. 40 mm | A54605_* | |
| | | | | int. 40 mm | A54604_* | |
|  | A54750 | Sleeving kit (pair). | 16-L120 | int. 50 mm | A54650_* | |
| | | | | int. 40 mm | A54653_* | |
|  | A56950 | Plastic sleeve with sliding drawer dn 45 mm. | 45-10 | - | A56950_* | |
| | | | | 45-12 | - | A56952_* |
| | | | | 45-14 | - | A56954_* |
| | | | | 45-15 | - | A56955_* |
| | | | | 45-16 | - | A56956_* |
| | | | 45-18 | - | A56958_* | |
|  | A344 | Nut and tail piece with O-RING | 1/2" | 3/8" | 3/4" | A34400_* |
| | | | | 3/8" | 3/4" | A34410_* |
| | | | | 3/8" | 24-19 | A34494_* |
| | | | | 1/2" | 24-19 | A34492_* |
|  | A354 | Protection cap for thermostatic valve | - | M 30x1.5 | A35402A | |

* It is necessary to specify the type of finishing at the end of code. For example for chrome: **V37110B**.

| B | R | L | J | I | M | H | E | EF | EFS Full color special |
|---|---|---|---|---|---|---|--|---|--|
|  |  |  |  |  |  |  |  |  | EFS 9016 O Bianco opaco Matt white  |
| | | | | | | |  |  | EFS 9005 O Nero opaco Matt black  |
| | | | | | | | | | EFS 9005 L Nero lucido Glass black  |

DESIGN RADIATOR VALVES TWIN SERIES

| | Model | Description | Size | Connection | Code |
|---|---------|--|----------|------------|------------------|
|  | NV27201 | Cap for lockshield valve. Chrome plated. | - | M 30x1.5 | NV27201_* |
|  | A574 | Handwheel for thermostatic valve. | - | M 30x1.5 | A57400A |
|  | NV32106 | Handwheel for "06" model. | - | M 24x1.5 | NV32106T |
|  | A400 | TRV head adaptor for "_06" models. | M 30x1.5 | M 24x1.5 | A40001T |
|  | A554 | Reduction with O-Ring. | 1/2" | 3/4" | A55400T |
|  | A554 | Reduction with O-Ring. | 1/2" | 3/4" | A55401T |
|  | A553 | Conical adaptor with O-Ring. | | | A55300T |
|  | A630 | Pre-setting key. | M 30x1.5 | | A63000A |

Theoretical references:

Koefficient of flow [Kv]

The **Kv** value expresses the amount of flow rate in m³/h that pass through the regulating valve **at a given preset position** in one hour with a differential pressure across the valve 1 bar.

In order to determine valve size, calculate the flow rate with the following formula:

$$Q = Kv * \sqrt{\Delta p \frac{1000}{\rho}}$$

Where:

Q - is the flow rate in m³/h;

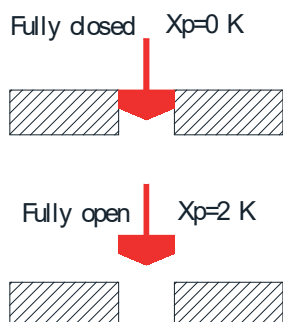
Δp - is the differential pressure across the valve in bar

ρ - is the density of passing liquid in kg/m³.

The **Kvs** is the Kv value of fully open valve.

Proportional band [Xp]

A proportional band of a valve is defined as the change in the required room temperature so that the closed valve is operated to allow reaching the design flow rate.



DESIGN RADIATOR VALVES TWIN SERIES

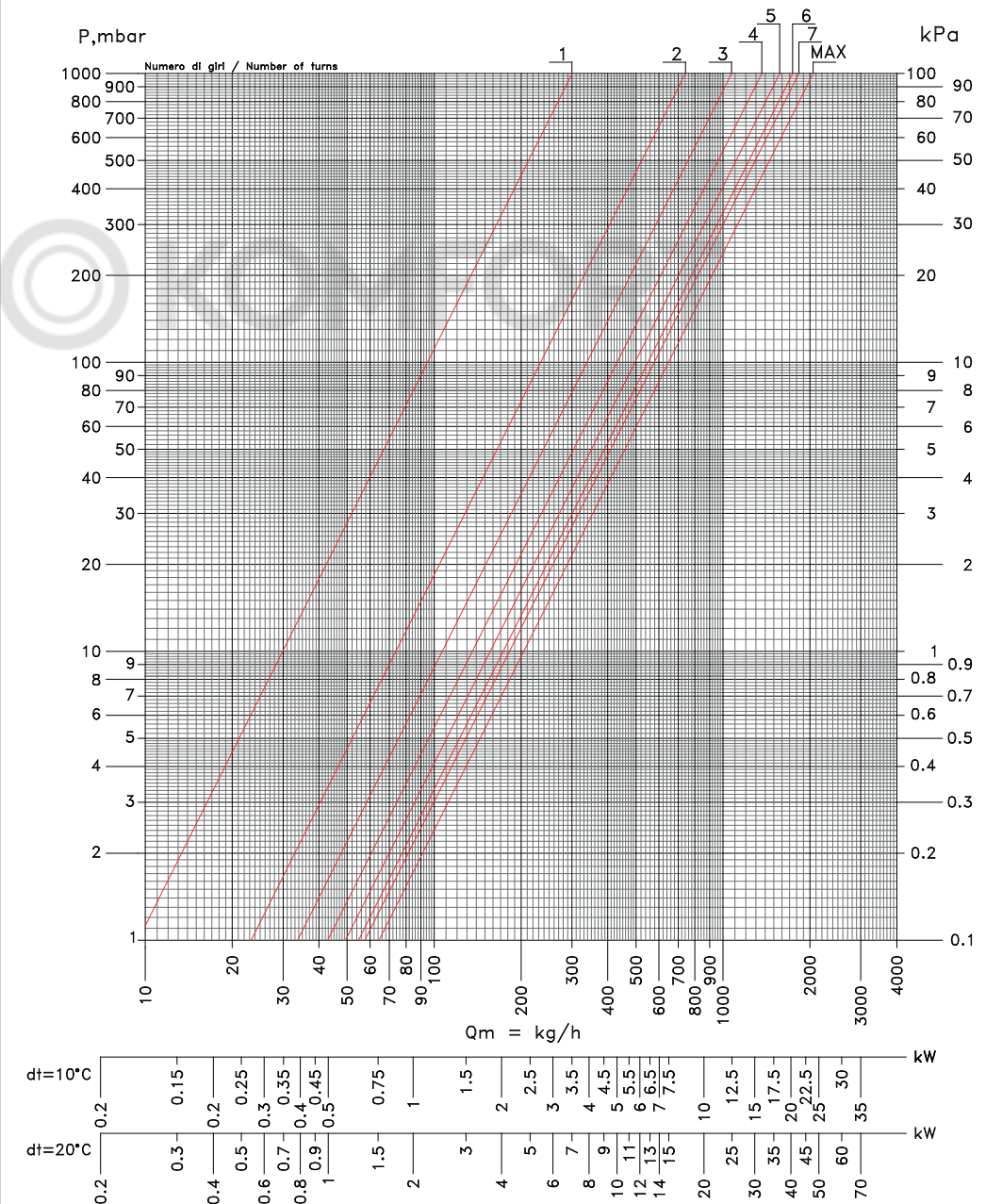
Hydraulic characteristics:

V421
V423
V371
V373
V42106
Angle valve
DN15 1/2"

| Pre-setting | Kv |
|---|-------------------|
| N | m ³ /h |
|  | 1 0.30 |
|  | 2 0.74 |
|  | 3 1.07 |
|  | 4 1.36 |
|  | 5 1.57 |
|  | 6 1.74 |
|  | 7 1.83 |
| Kvs | 2.05 |

The diagrams show the values of the valve head losses in the different preset positions. For each of them is shown the corresponding Kv values.

TWIN THERMO PRESET BITUBE
ANGLE DN 15 1/2"



Note: To avoid excessive noisiness in the circuit, avoid using thermostatic valves with Δp values of more than 0,2 - 0,25 bar [20-25 kPa].

DESIGN RADIATOR VALVES TWIN SERIES

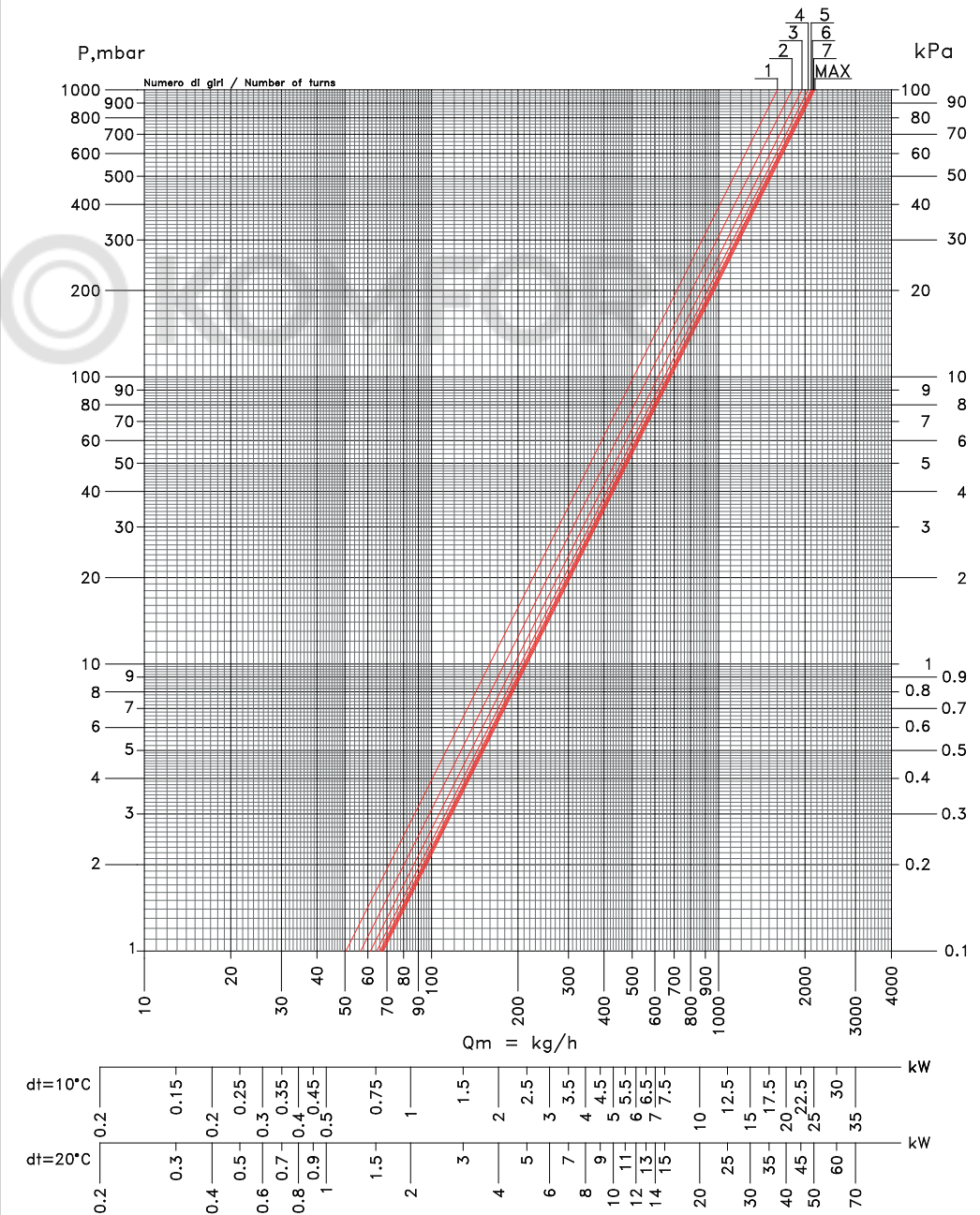
Hydraulic characteristics:

V421
V423
V371
V373
V42106
Angle valve
DN15 1/2"

| Pre-setting | Kv |
|---|------------------------|
| N | m ³ /h |
|  1 | 1.60 |
|  2 | 1.80 |
|  3 | 1.95 |
|  4 | 2.05 |
|  5 | 2.10 |
|  6 | 2.12 |
|  7 | 2.14 |
| Kvs | m³/h |
| | 2.16 |

The diagrams show the values of the valve head losses in the different preset positions. For each of them is shown the corresponding Kv values.

TWIN PRESET MONOTUBE
ANGLE DN 15 1/2"



Note: To avoid excessive noisiness in the circuit, avoid using thermostatic valves with Δp values of more than 0,2 - 0,25 bar [20-25 kPa].

DESIGN RADIATOR VALVES TWIN SERIES

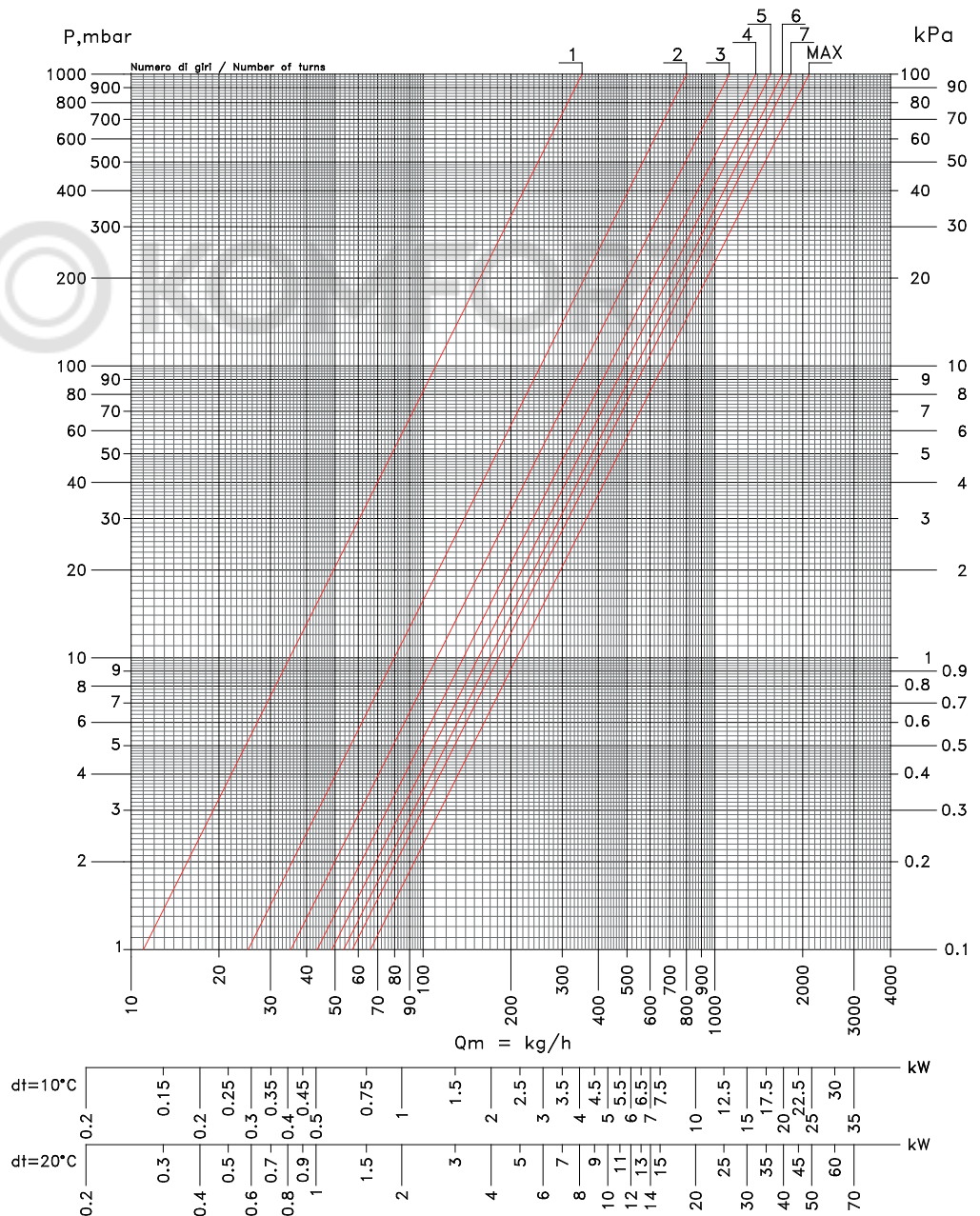
Hydraulic characteristics:

**V425
V427
V375
V377
V42506**
Straight valve
DN15 1/2"

| Pre-setting | Kv | a |
|-------------|-------------|------------------|
| N | m³/h | |
| | 1 | 0.35 0.97 |
| | 2 | 0.80 0.86 |
| | 3 | 1.12 0.72 |
| | 4 | 1.38 0.57 |
| | 5 | 1.55 0.45 |
| | 6 | 1.70 0.34 |
| | 7 | 1.82 0.25 |
| Kvs | m³/h | 2.10 0.00 |

The diagrams show the values of the valve head losses in the different preset positions. For each of them is shown the corresponding Kv values.

TWIN THERMO PRESET BITUBE
STRAIGHT DN 15 1/2"



Note: To avoid excessive noisiness in the circuit, avoid using thermostatic valves with Δp values of more than 0,2 - 0,25 bar [20-25 kPa].

DESIGN RADIATOR VALVES TWIN SERIES

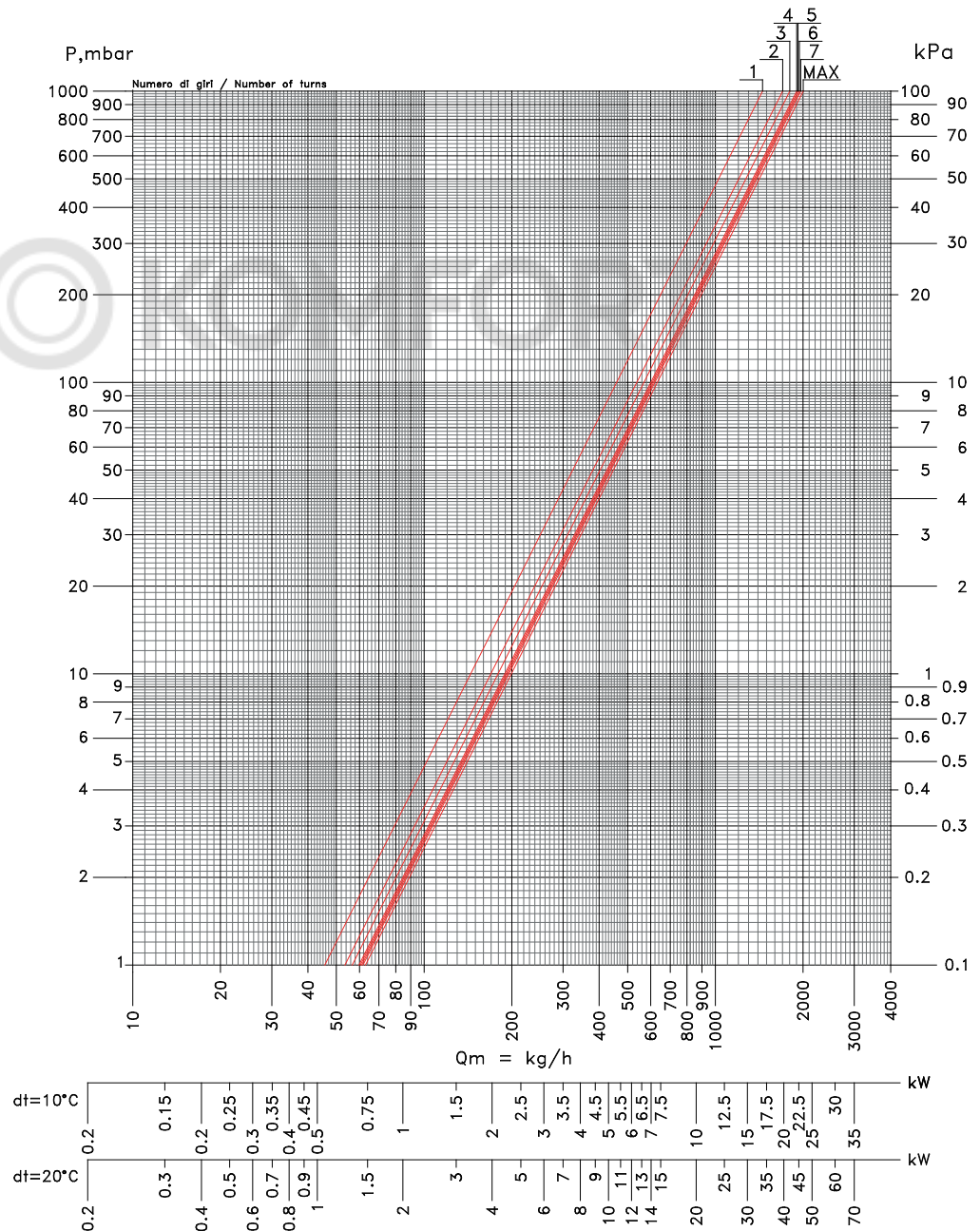
Hydraulic characteristics:

V425
V427
V375
V377
V42506
Straight valve
DN15 1/2"

| Pre-setting | Kv |
|---|------------------------|
| N | m ³ /h |
|  | 1.45 |
|  | 1.70 |
|  | 1.80 |
|  | 1.90 |
|  | 1.92 |
|  | 1.94 |
|  | 1.96 |
| Kvs | m³/h |
| | 2.00 |

The diagrams show the values of the valve head losses in the different preset positions. For each of them is shown the corresponding Kv values.

TWIN PRESET MONOTUBE
STRAIGHT DN 15 1/2"



Note: To avoid excessive noisiness in the circuit, avoid using thermostatic valves with Δp values of more than 0,2 - 0,25 bar [20-25 kPa].

DESIGN RADIATOR VALVES TWIN SERIES

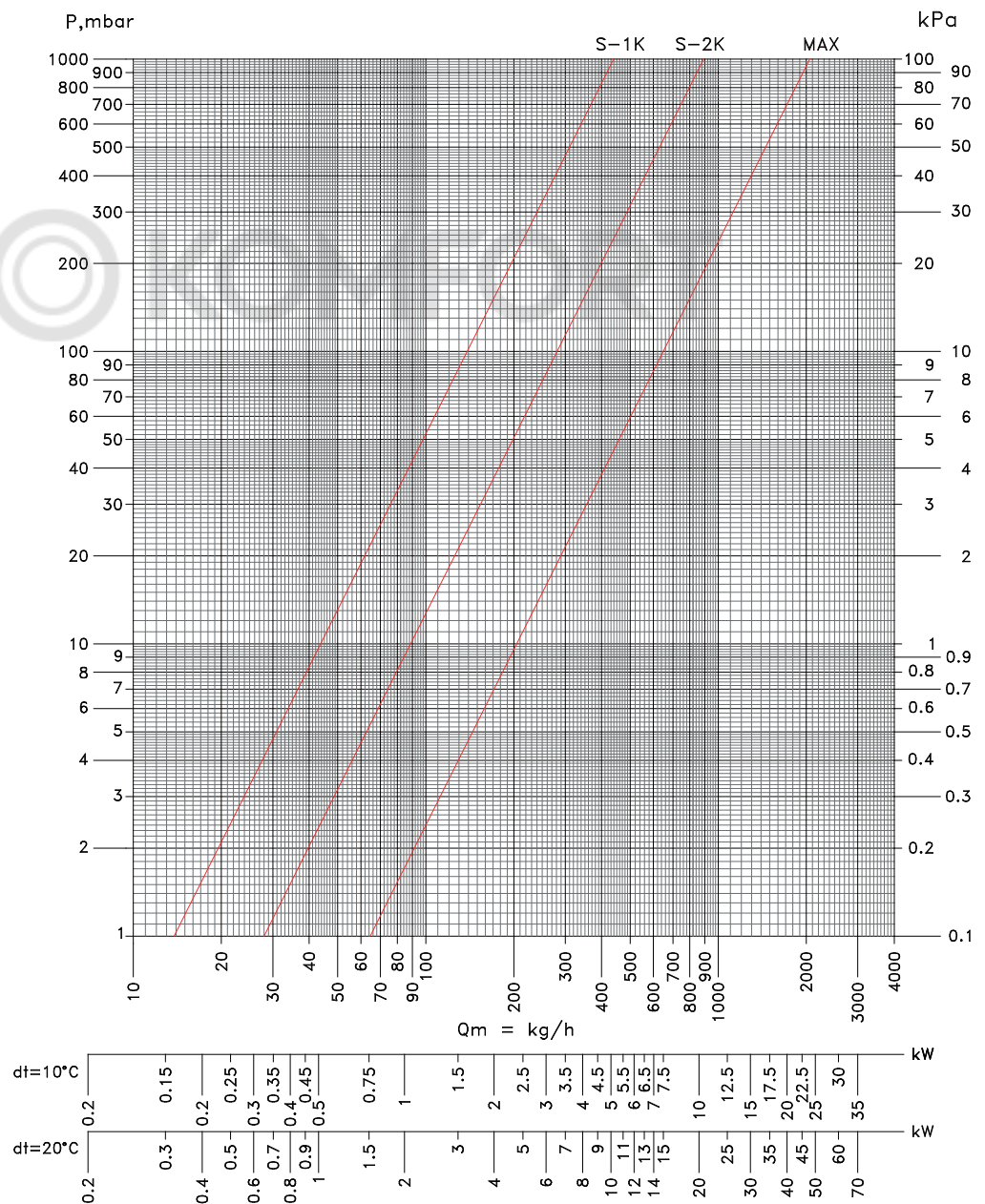
Hydraulic characteristics:

V421 V423
V371 V373
V42106
Angle valve
DN15 1/2"

| Technical data | | |
|-----------------|------|--------|
| Kv | 1K | 0.44 |
| | 2K | 0.89 |
| Kvs | 2.05 | |
| Q _{mN} | kg/h | 281.32 |

Pressure loss diagrams are made with position 3 of the thermostatic head and the difference between ambient and preset temperature of 1K (diagram S-1K), 2K (diagram S-2K) and with fully open valve.

TWIN THERMO BITUBE
ANGLE DN 15 1/2"



Note: To avoid excessive noisiness in the circuit, avoid using thermostatic valves with Δp values of more than 0,2 - 0,25 bar [20-25 kPa].

DESIGN RADIATOR VALVES TWIN SERIES

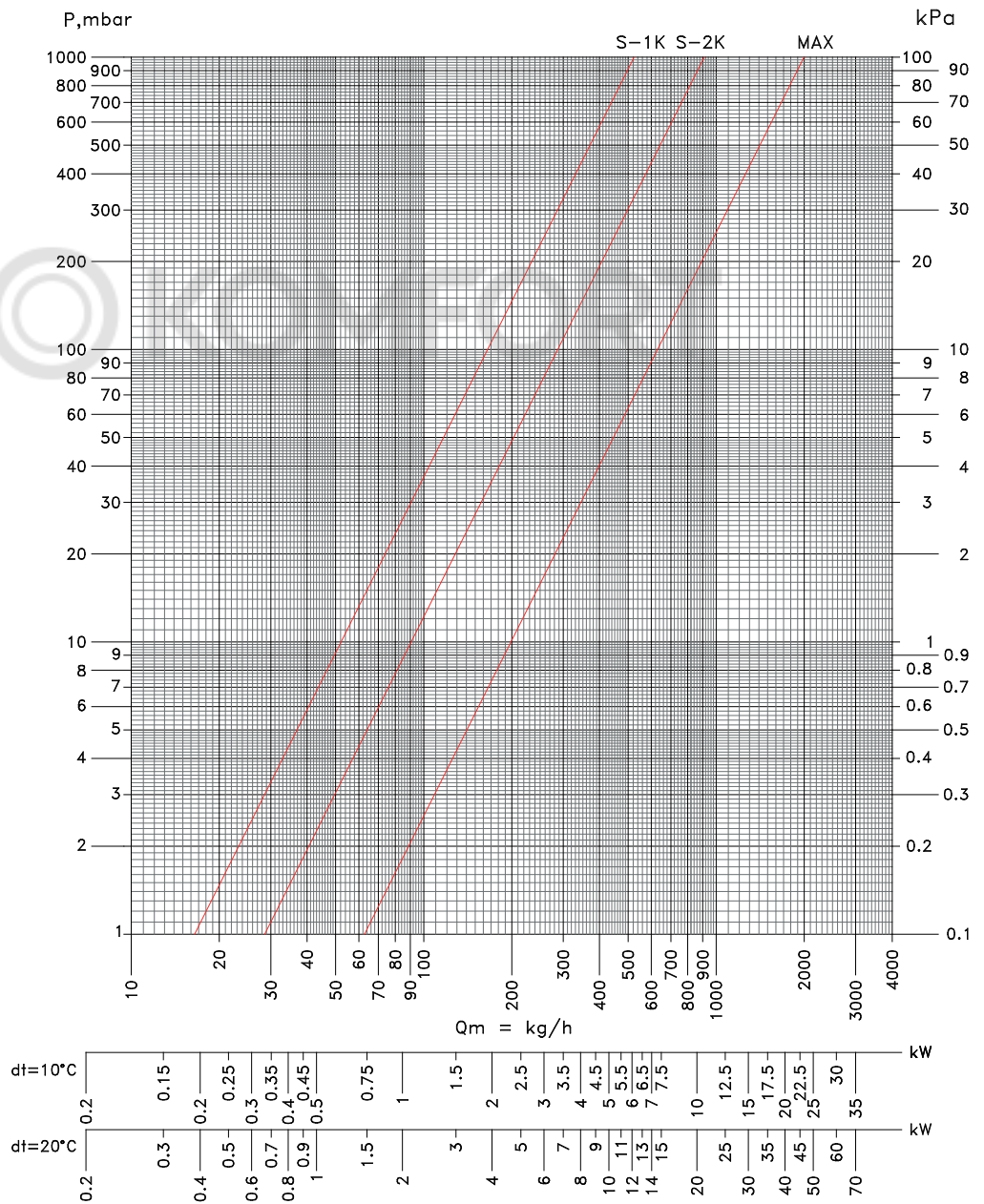
Hydraulic characteristics:

V425 V427
V375 V377
V42506
 Straight valve
 DN15 1/2"

| Technical data | | |
|-----------------|------|--------|
| Kv | 1K | 0.52 |
| | 2K | 0.91 |
| | Kvs | 2.00 |
| Q _{mN} | kg/h | 287.05 |

Pressure loss diagrams are made with position 3 of the thermostatic head and the difference between ambient and preset temperature of 1K (diagram S-1K), 2K (diagram S-2K) and with fully open valve.

TWIN THERMO BITUBE
 STRAIGHT DN 15 1/2"



Note: To avoid excessive noisiness in the circuit, avoid using thermostatic valves with Δp values of more than 0,2 - 0,25 bar [20-25 kPa].

DESIGN RADIATOR VALVES TWIN SERIES

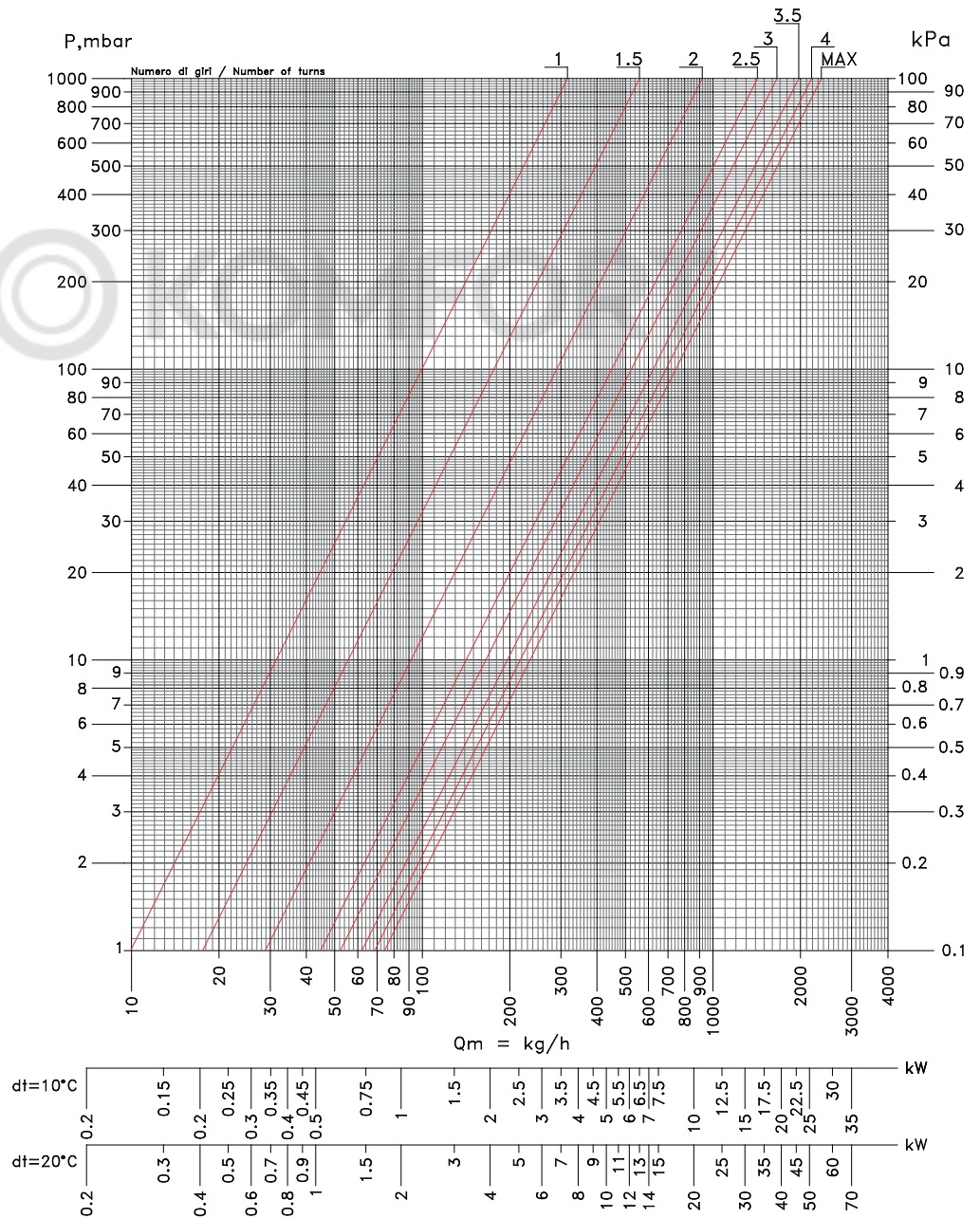
Hydraulic characteristics:

**V421 V423
V371 V373
V42106**
Angle valve
DN15 1/2"

| Number of turns | Kv |
|-----------------|-------------------|
| N | m ³ /h |
| 1 | 0.32 |
| 1.5 | 0.56 |
| 2 | 0.92 |
| 2.5 | 1.42 |
| 3 | 1.66 |
| 3.5 | 1.97 |
| 4 | 2.18 |
| Kvs | 2.36 |

The positions are determined with the number of opening turns of the valve from the fully closed position.

TWIN LOCKSHIELD BITUBE
ANGLE DN 15 1/2"



DESIGN RADIATOR VALVES TWIN SERIES

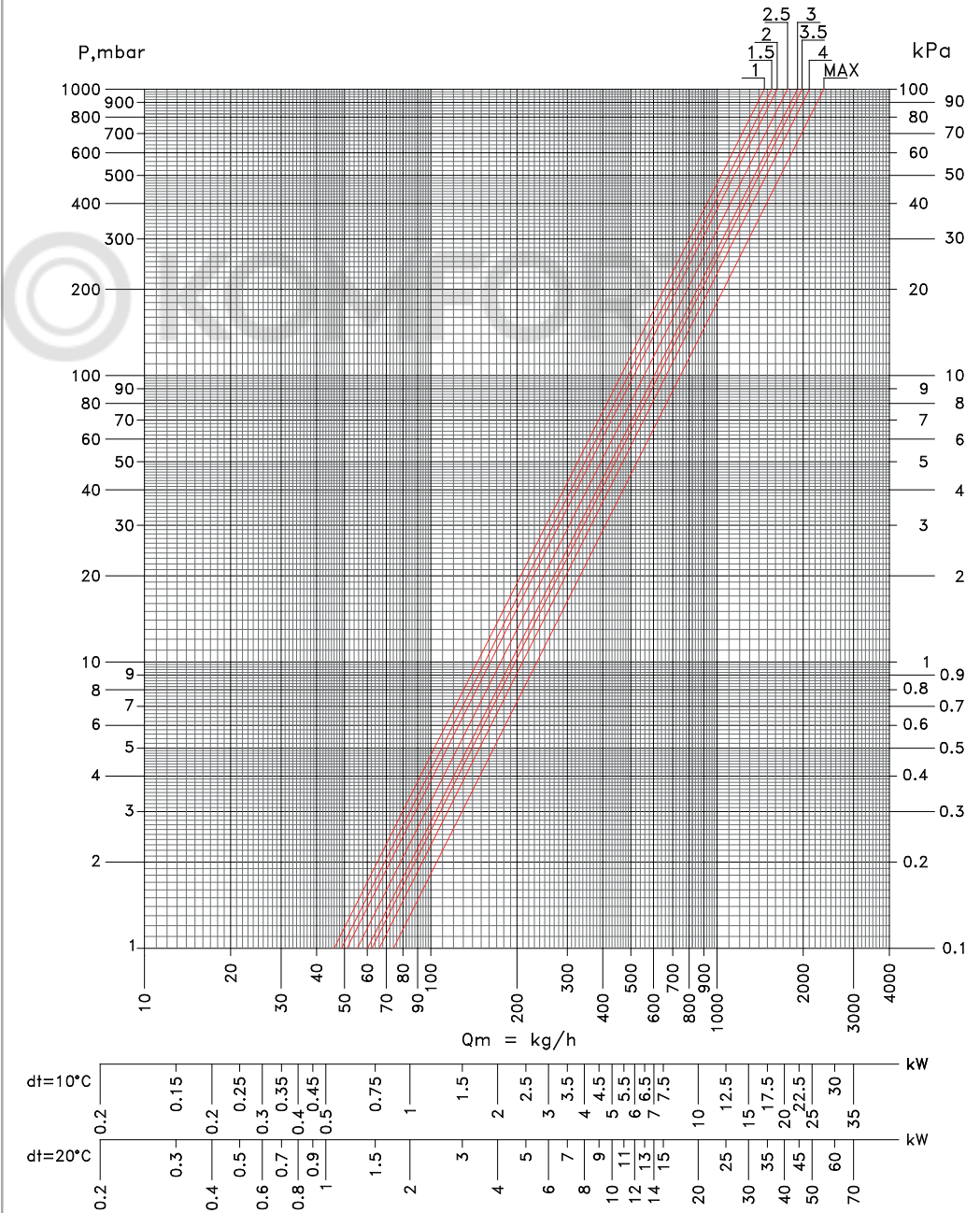
Hydraulic characteristics:

V421 V423
V371 V373
V42106
Angle valve
DN15 1/2"

| Number of turns | Kv |
|-----------------|-------------------|
| N | m ³ /h |
| 1 | 1.46 |
| 1.5 | 1.55 |
| 2 | 1.62 |
| 2.5 | 1.76 |
| 3 | 1.90 |
| 3.5 | 1.98 |
| 4 | 2.03 |
| Kvs | 2.10 |

The positions are determined with the number of opening turns of the valve from the fully closed position.

TWIN LOCKSHIELD MONOTUBE
ANGLE DN 15 1/2"



DESIGN RADIATOR VALVES TWIN SERIES

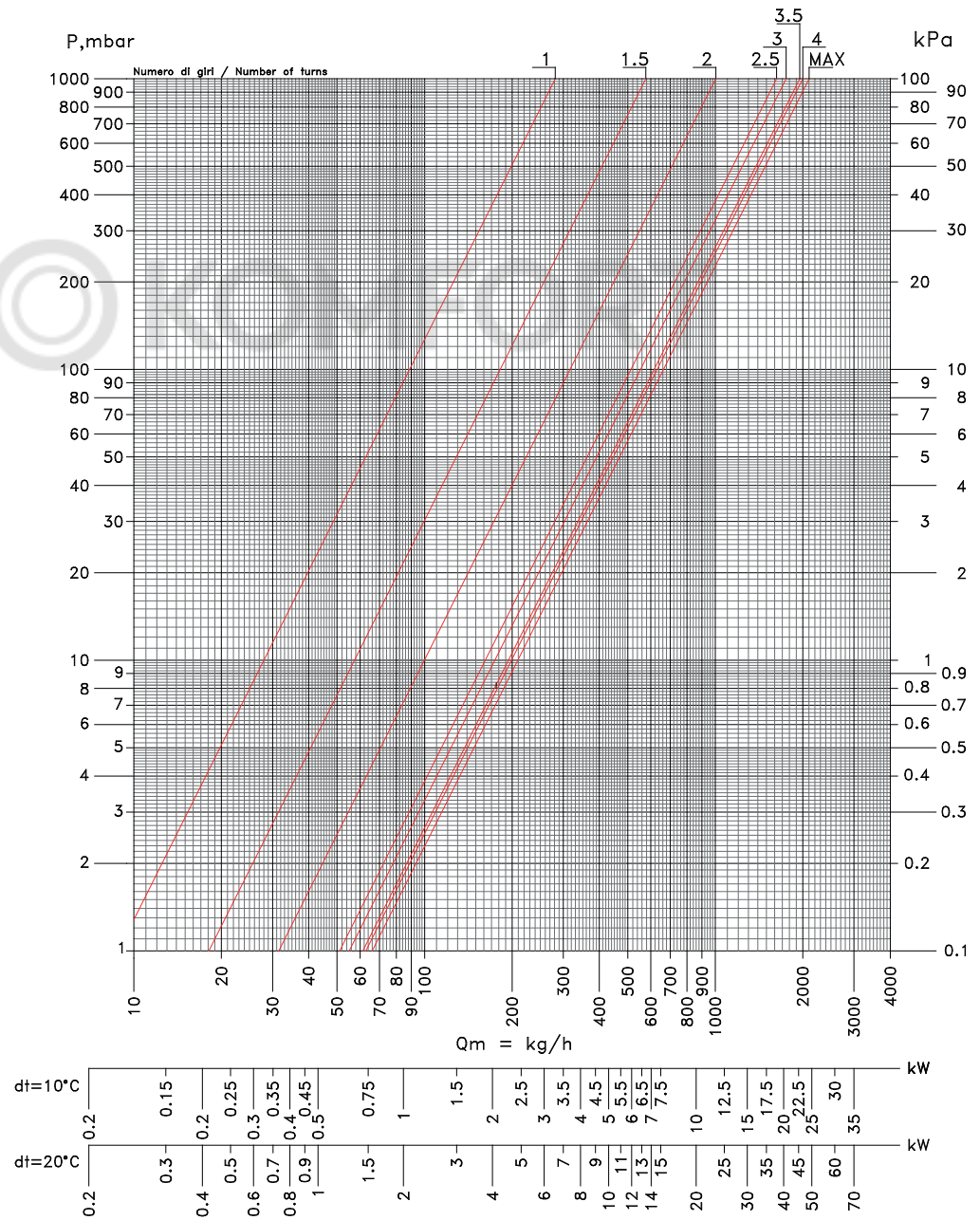
Hydraulic characteristics:

V425 V427
V375 V377
V42506
Straight valve
DN15 1/2"

| Number of turns | Kv |
|-----------------|-------------------|
| N | m ³ /h |
| 1 | 0.28 |
| 1.5 | 0.58 |
| 2 | 1.00 |
| 2.5 | 1.62 |
| 3 | 1.75 |
| 3.5 | 1.95 |
| 4 | 2.00 |
| Kvs | 2.10 |

The positions are determined with the number of opening turns of the valve from the fully closed position.

TWIN LOCKSHIELD BITUBE
STRAIGHT DN 15 1/2"



DESIGN RADIATOR VALVES TWIN SERIES

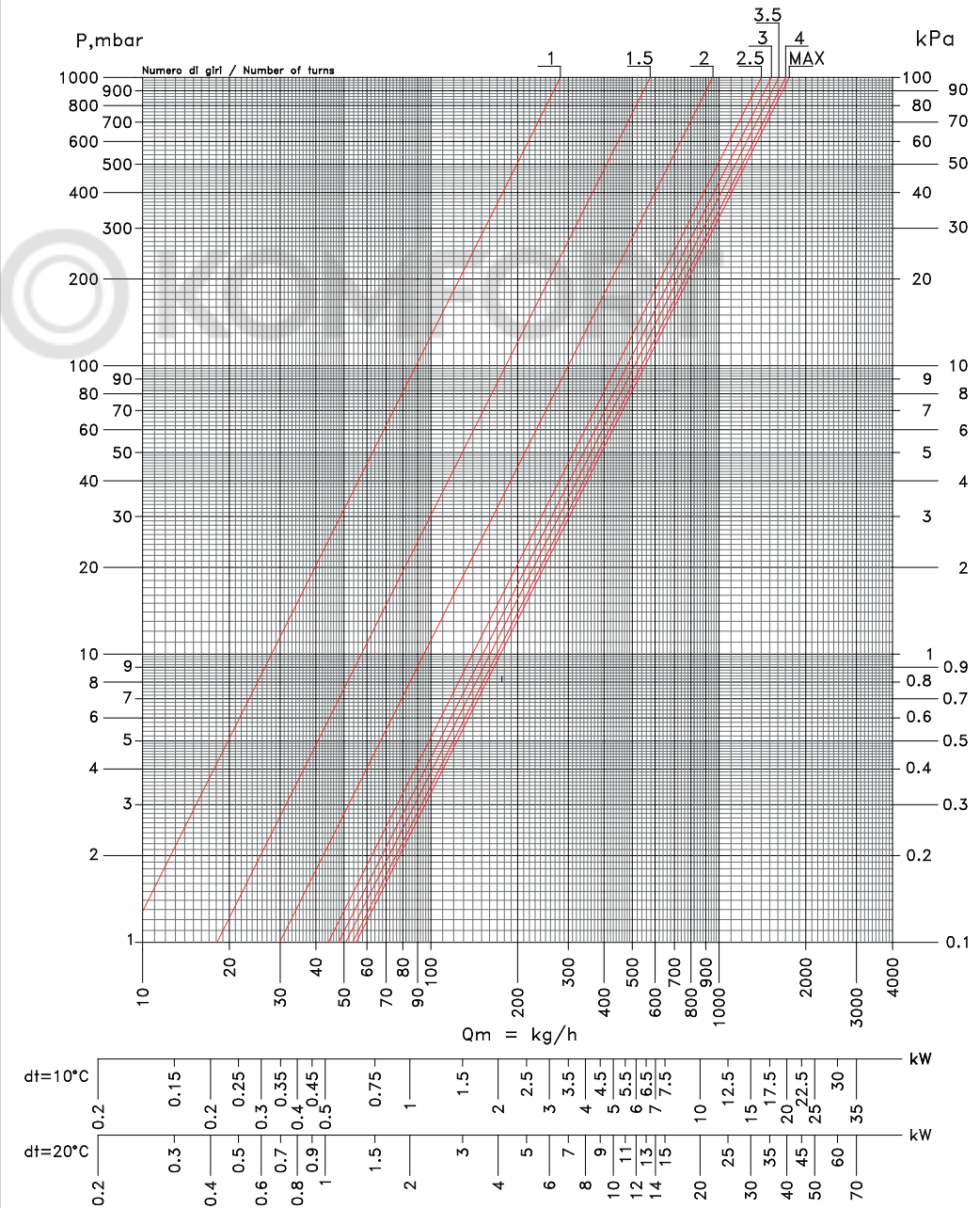
Hydraulic characteristics:

**V425 V427
V375 V377
V42506**
Straight valve
DN15 1/2"

| Number of turns | Kv |
|-----------------|-------------------|
| N | m ³ /h |
| 1 | 0.32 |
| 1.5 | 0.57 |
| 2 | 0.95 |
| 2.5 | 1.40 |
| 3 | 1.52 |
| 3.5 | 1.61 |
| 4 | 1.70 |
| Kvs | 1.75 |

The positions are determined with the number of opening turns of the valve from the fully closed position.

TWIN LOCKSHIELD MONOTUBE
STRAIGHT DN 15 1/2"



DESIGN RADIATOR VALVES TWIN SERIES

Example:

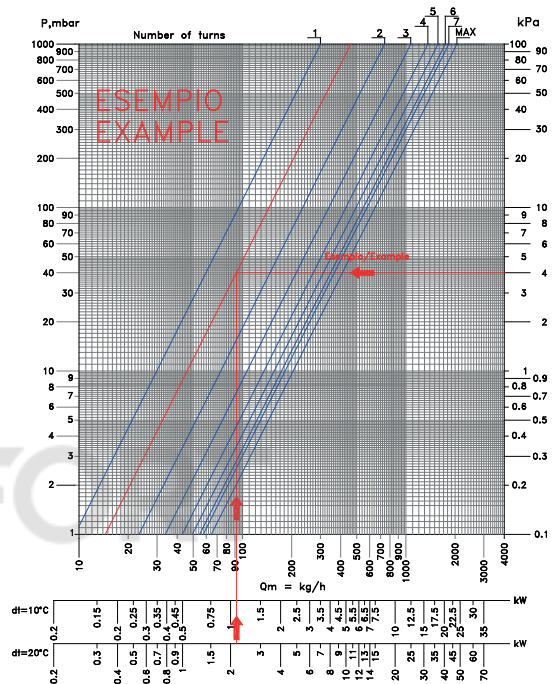
Determination of preset of the valve:

| Given data | |
|---|------------------|
| Type of valve | V371PS DN15 1/2" |
| Heat flow of radiator | 2150 W |
| Temperature difference | 20 °C |
| Differential pressure across the radiator | 4 kPa |

The mass flow is calculated using the following relation:

$$Q_m = \frac{Q}{c * \Delta t} = \frac{2150}{1,163 * 20} = 92 \text{ kg/h}$$

Alternatively, it is possible to use the graduated scale of the selected valve diagram that provides the flow rate according to the design dT. It is possible to determine the required pre-setting as shown in the example alongside where it is equal to 1.5.



Determination of valve pressure loss:

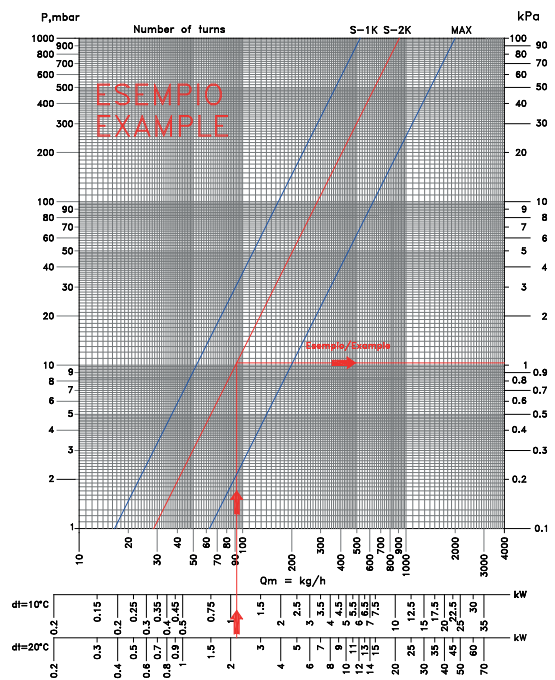
| Given data | |
|---------------------------|----------------|
| Type of valve | V375 DN15 1/2" |
| Heat flow of radiator | 2150 W |
| Temperature difference | 20 °C |
| Desired proportional band | 2K |

The mass flow is calculated using the following relation:

$$Q_m = \frac{Q}{c * \Delta t} = \frac{2150}{1,163 * 20} = 92 \text{ kg/h}$$

Alternatively, it is possible to use the graduated scale of the selected valve diagram that provides the flow rate according to the design dT.

It is possible to determine the head losses value for the proportional band chosen as shown in the example alongside where it is equal to 1.1 kPa.



SPECIFICATION SUMMARIES

V421 MODEL

Thermostatic mono/bitube angle H valve with manual handle for copper or plastic pipe. The single valve body contains both elements: thermostatic valve and lockshield valve. Distance between connections 50 mm. Connection for thermostatic head M30x1,5. Valve body made of color finishing brass. Control stem made of stainless steel with EPDM peroxide O-Ring. Manual control of lockshield valve with shutter under the cap. Connection to radiator with tailpeace 1/2"M. Maximum working pressure 10 bar. Temperature range of liquid medium from 5 to 110 °C.

V425 MODEL

Thermostatic mono/bitube straight H valve with manual handle for copper or plastic pipe. The single valve body contains both elements: thermostatic valve and lockshield valve. Distance between connections 50 mm. Connection for thermostatic head M30x1,5. Valve body made of color finishing brass. Control stem made of stainless steel with EPDM peroxide O-Ring. Manual control of lockshield valve with shutter under the cap. Connection to radiator with tailpeace 1/2"M. Maximum working pressure 10 bar. Temperature range of liquid medium from 5 to 110 °C.

V371 MODEL

Thermostatic mono/bitube angle H valve with plastic protecton cap for copper or plastic pipe. The single valve body contains both elements: thermostatic valve and lockshield valve. Distance between connections 50 mm. Connection for thermostatic head M30x1,5. Valve body made of color finishing brass. Control stem made of stainless steel with EPDM peroxide O-Ring. Manual control of lockshield valve with shutter under the cap. Connection to radiator with tailpeace 1/2"M. Maximum working pressure 10 bar. Temperature range of liquid medium from 5 to 110 °C.

V375 MODEL

Thermostatic mono/bitube straight H valve with plastic protecton cap for copper or plastic pipe. The single valve body contains both elements: thermostatic valve and lockshield valve. Distance between connections 50 mm. Connection for thermostatic head M30x1,5. Valve body made of color finishing brass. Control stem made of stainless steel with EPDM peroxide O-Ring. Manual control of lockshield valve with shutter under the cap. Connection to radiator with tailpeace 1/2"M. Maximum working pressure 10 bar. Temperature range of liquid medium from 5 to 110 °C.

V481 MODEL

Lockshield mono/bitube angle H valve with brass cap for copper or plastic pipe. The single valve body contains double lockshield elements. Distance between connections 50 mm. Valve body made of color finishing brass. Manual control of lockshield valve with shutter under the cap. Connection to radiator with tailpeace 1/2"M. Maximum working pressure 10 bar. Temperature range of liquid medium from 5 to 110 °C.

V485 MODEL

Lockshield mono/bitube straight H valve with brass cap for copper or plastic pipe. The single valve body contains double lockshield elements. Distance between connections 50 mm. Valve body made of color finishing brass. Manual control of lockshield valve with shutter under the cap. Connection to radiator with tailpeace 1/2"M. Maximum working pressure 10 bar. Temperature range of liquid medium from 5 to 110 °C.

SPECIFICATION SUMMARIES

V423 MODEL

Thermostatic mono/bitube angle H valve with manual handle for copper or plastic pipe. The single valve body contains both elements: thermostatic valve and lockshield valve. Distance between connections 50 mm. Connection for thermostatic head M30x1,5. Valve body made of brass with color finishing. Control stem made of stainless steel with EPDM peroxide O-Ring. Manual control of lockshield valve with shutter under the cap. Connection to radiator with tailpeace 3/4"F. Maximum working pressure 10 bar. Temperature range of liquid medium from 5 to 110 °C.

V427 MODEL

Thermostatic mono/bitube straight H valve with manual handle for copper or plastic pipe. The single valve body contains both elements: thermostatic valve and lockshield valve. Distance between connections 50 mm. Connection for thermostatic head M30x1,5. Valve body made of brass with color finishing. Control stem made of stainless steel with EPDM peroxide O-Ring. Manual control of lockshield valve with shutter under the cap. Connection to radiator with tailpeace 3/4"F. Maximum working pressure 10 bar. Temperature range of liquid medium from 5 to 110 °C.

V373 MODEL

Thermostatic mono/bitube angle H valve with plastic protecton cap for copper or plastic pipe. The single valve body contains both elements: thermostatic valve and lockshield valve. Distance between connections 50 mm. Connection for thermostatic head M30x1,5. Valve body made of brass with color finishing. Control stem made of stainless steel with EPDM peroxide O-Ring. Manual control of lockshield valve with shutter under the cap. Connection to radiator with tailpeace 3/4"F. Maximum working pressure 10 bar. Temperature range of liquid medium from 5 to 110 °C.

V377 MODEL

Thermostatic mono/bitube straight H valve with plastic protecton cap for copper or plastic pipe. The single valve body contains both elements: thermostatic valve and lockshield valve. Distance between connections 50 mm. Connection for thermostatic head M30x1,5. Valve body made of brass with color finishing. Control stem made of stainless steel with EPDM peroxide O-Ring. Manual control of lockshield valve with shutter under the cap. Connection to radiator with tailpeace 3/4"F. Maximum working pressure 10 bar. Temperature range of liquid medium from 5 to 110 °C.

V483 MODEL

Lockshield mono/bitube angle H valve with brass cap for copper or plastic pipe. The single valve body contains double lockshield elements. Distance between connections 50 mm. Connection for thermostatic head M30x1,5. Valve body made of brass with color finishing. Manual control of lockshield valve with shutter under the cap. Connection to radiator with tailpeace 3/4"F. Maximum working pressure 10 bar. Temperature range of liquid medium from 5 to 110 °C.

V487 MODEL

Lockshield mono/bitube straight H valve with brass cap for copper or plastic pipe. The single valve body contains double lockshield. Distance between connections 50 mm. Connection for thermostatic head M30x1,5. Valve body made of brass with color finishing. Manual control of lockshield valve with shutter under the cap. Connection to radiator with tailpeace 3/4"F. Maximum working pressure 10 bar. Temperature range of liquid medium from 5 to 110 °C.

V42106 MODEL

Thermostatic mono/bitube angle H valve with brass manual handle for copper or plastic pipe. The single valve body contains both elements: thermostatic valve and lockshield valve. Distance between connections 50 mm. Connection for thermostatic head M24x1,5. Valve body made of color finishing brass. Control stem made of stainless steel with EPDM peroxide O-Ring. Manual control of lockshield valve with shutter under the cap. Connection to radiator with tailpiece 1/2"M. Maximum working pressure 10 bar. Temperature range of liquid medium from 5 to 110 °C.

V42506 MODEL

Thermostatic mono/bitube straight H valve with brass manual handle for copper or plastic pipe. The single valve body contains both elements: thermostatic valve and lockshield valve. Distance between connections 50 mm. Connection for thermostatic head M24x1,5. Valve body made of color finishing brass. Control stem made of stainless steel with EPDM peroxide O-Ring. Manual control of lockshield valve with shutter under the cap. Connection to radiator with tailpiece 1/2"M. Maximum working pressure 10 bar. Temperature range of liquid medium from 5 to 110 °C.



Company Carlo Poletti S.r.l. reserves the right to change the product line and corresponding technical data at any time and without any notification.

Carlo Poletti srl
Sede legale/Registered office:
Via Tancognino, 134
28024 Gozzano (NO) Italy
P.IVA/VAT: IT00127430031

Stabilimento e uffici/Production and offices:
Via Martiri delle Foibe, 15
28024 Gozzano (NO) Italy
Tel. +39 0322 94752 / 913699
Fax +39 0322 956577
info@poletti.it - www.poletti.it

